

Summary of Community Meetings on the
Draft Nunavut Land Use Plan
ARCTIC BAY
November 1-2, 2012



Nunavut Planning
Commission



Revised - August 2013

Contents

Introduction	3	Appendix 1: Open House	17
1.1 Context	3	Appendix 2: Elected Officials Meeting	18
1.2 Purpose.....	3	Appendix 3: Questions and Answers.....	19
1.3 Methodology.....	3	Appendix 4: Community Workshop Scanned Maps	20
1.4 Public Awareness	3	Appendix 5: Follow-up Meeting	36
1.5 Community Population and Participation.....	3		
 Protecting and Sustaining the Environment	4		
2.1 Areas presented to participants.....	4		
2.2 Areas identified by participants.....	4		
2.3 Areas of importance to Protecting and Sustaining the Environment..	4		
 Encouraging Conservation Planning	6		
3.1 Areas presented to participants	6		
3.2 Areas identified by participants.....	6		
3.3 Areas of importance to Encouraging Conservation Planning	6		
 Building Healthier Communities	8		
4.1 Areas presented to participants.....	8		
4.2 Areas identified by participants.....	8		
4.3 Areas of importance to Building Healthier Communities	8		
 Encouraging Sustainable Economic Development	10		
5.1 Areas presented to participants.....	10		
5.2 Areas identified by participants.....	10		
5.3 Areas of importance to Encouraging Sustainable Economic Development	10		
 Mixed Use.....	12		
6.1 Areas identified in the Draft Plan	12		
6.2 Areas identified by participants	12		
 Overlapping Goals.....	15		
7.1 Areas identified for multiple goals	15		

Chapter 1: Introduction

1.1 Context

The Nunavut Planning Commission (NPC) is preparing a land use plan to guide and direct resource use and development in the Nunavut Settlement Area (NSA). As part of its efforts, the NPC is facilitating discussions in each Nunavut community on land use and resource management issues. Information that is obtained from these discussions will be used to inform decisions regarding the further development of the Nunavut Land Use Plan (NLUP).

1.2 Purpose

This report presents information obtained during the NPC's visit to the community of Arctic Bay. The purpose of the report is to inform decisions regarding the further development of the NLUP, ensuring that the plan reflects the priorities and values of residents.

It is important to note that the information contained in the Community Report will be considered in conjunction with all other feedback when revising the DNLUP.

1.3 Methodology

Information was presented to and received from participants in Arctic Bay in accordance with the Nunavut Planning Commission's Community Engagement Strategy (Engagement Strategy). The Engagement Strategy provides for the following methods for presenting and receiving information;

- **Open house;** information contained in the Draft Nunavut Land Use Plan (DNLUP) was presented on 7 multi lingual large format poster boards. Participants were encouraged to review the posters, ask questions and provide feedback. Comments and questions were recorded by NPC staff and are contained in Appendix 1.
- **Elected Officials Meeting;** The NPC Chairperson and NPC staff met with senior and elected officials in the community. The development process for the DNLUP, its content and next steps were presented.

Comments and questions were recorded during the session and are contained in Appendix 2.

- **Public Workshop;** A formal presentation of the Draft Plan content was provided to participants, including a slide overview of its content. Following the presentation, questions and comments were received from participants. The questions, comments and responses are contained in Appendix 3.

A mapping session followed the presentation of the Draft Plan. The mapping session involved discussions regarding the topics presented in the DNLUP and encouraged participants to identify additional areas and issues important for inclusion in a NLUP. Information received during this session was recorded by NPC staff and is included in Appendix 4.

- **Wrap Up Session;** Staff was available to discuss the areas identified during the mapping and identify any additional issues or areas of interest.

Areas that participants identified during mapping sessions as important to a particular goal have, in the majority of cases, been included in this report as they were recorded. In instances where participants identified an area that was better suited to another goal, the area has been reclassified to the more suitable goal and has been verified as appropriate to do so by the Community.

A follow-up meeting was held on May 30, 2013 to review a draft version of this report with the Hamlet Council, Hunters and Trappers Organization, and Community Lands and Resource Committee. A summary of this meeting is included in Appendix 5.

1.4 Public Awareness

The NPC raised public awareness regarding its visit to Arctic Bay in accordance with the Engagement Strategy.

The DNLUP and supporting materials were mailed to the Mayor and Council of Arctic Bay, the Hunters and Trappers Organizations (HTO) in September 2012. In addition, letters of invitation were sent to the Arctic Bay Mayor and Council and

HTO in advance of the NPC's visit to advise of the meetings and to encourage participation. Follow up phone calls were also made.

Public notice of the various events was provided in the following ways:

- **Nunatsiaq News and Nunavut News/North;** notice of community meetings were posted in both newspapers a minimum of 45 days in advance.
- **Co-op cable TV;** notice of community meetings was run a minimum of 45 days in advance for one week and run again for no less than 14 days before the meetings.
- **Community radio;** notices were read by the hosts and a live interview with the Commission Chairperson was conducted.
- **Community bulletin boards;** notices were posted on bulletin boards around the community 45 days and again 14 days in advance of the meetings.
- **Community mail drop;** one page flyers that announced the meetings and their purpose were delivered to the post office in each community for all mail boxes that accept unaddressed ad-mail.
- **nunavut.ca;** the schedule of community visits, the Draft Plan, and all supporting information was available on the Commission's website.

1.5 Community Population and Participation

Arctic Bay is a community of approximately 825 people (Statistics Canada. 2011 Census). It is located on the northern coast of Baffin Island (see Figure 1).

The Commission visited the community on November 1-2, 2012. All events occurred as scheduled. The sessions were attended as follows;

- **Elected Officials Meeting;** the Mayor and members of the Hamlet Council and HTO attended the elected officials meeting.
- **Open house;** approximately 45 people attended the open house to review the Draft Plan.
- **Public Workshop;** approximately 65 people attended the presentation of the DNLUP and facilitated mapping sessions. Information was recorded in three separate mapping groups.
- **Wrap Up Session;** approximately 10 people attended the wrap up session. No additional mapping was conducted.



Figure 1. Location of Arctic Bay

Chapter 2: Protecting and Sustaining the Environment

Protecting and Sustaining the Environment was one of five topics presented to and discussed by participants during the Open House, Elected Officials Meeting, Public Workshop and Wrap up Session, collectively referred to in this document as information sharing and gathering sessions.

2.1 Areas presented to participants

During the information sharing and gathering sessions, participants were presented the following areas and issues as important to Protecting and Sustaining the Environment.

- Key bird habitat sites
- Caribou Habitat sites
- Atlantic Cod Lakes
- Cumulative Impacts
- Transboundary considerations
- Climate change

The importance of these issues and areas to Protecting and Sustaining the Environment was not disputed by participants during the information sharing and gathering sessions.

2.2 Areas identified by participants

Additional areas and issues were identified by participants as important to Protecting and Sustaining the Environment during the information sharing and gathering sessions. These additional areas are;

- Caribou
- Marine Mammals
- Nesting areas for birds
- Muskox
- Important wildlife areas

- National Parks
- Polar Bear

2.3 Areas of importance to Protecting and Sustaining the Environment



Areas and issues discussed during the information sharing and gathering sessions as important to Protecting and Sustaining the Environment are illustrated on Map 1, including areas identified in the DNLUP and areas identified by the community. Scanned images of the maps on which community feedback was recorded can be found in Appendix 4.

Based on discussions with participants, the NPC understands that:

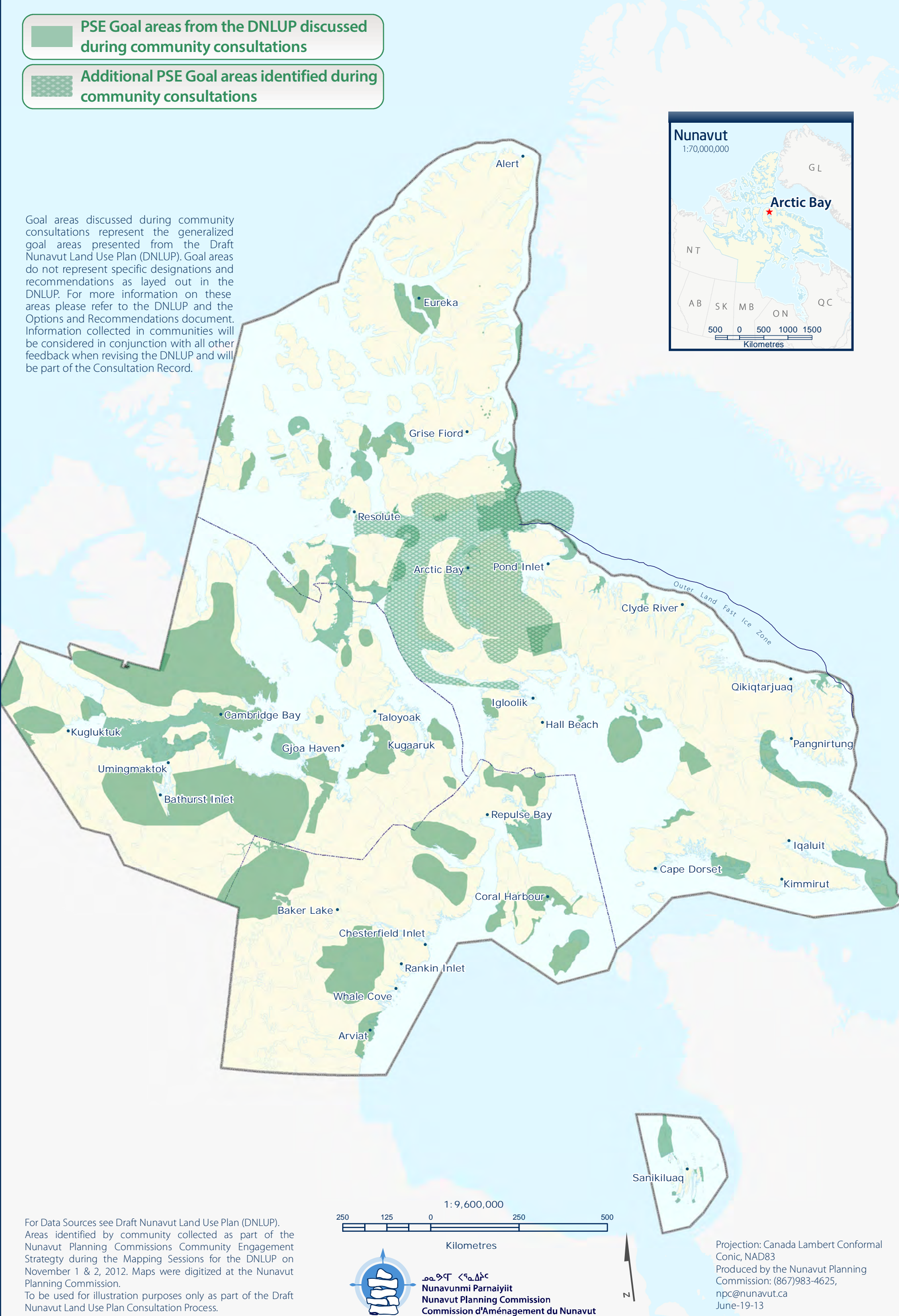
- The areas identified on Map 1 are considered by the Community to be important to Protecting and Sustaining the Environment.
- In these areas, the community would like the NLUP to encourage activities that support environmental protection and management needs, including wildlife conservation, protection and management.

This feedback will be considered in conjunction with all other feedback when revising the DNLUP.



-  PSE Goal areas from the DNLUP discussed during community consultations
-  Additional PSE Goal areas identified during community consultations

Goal areas discussed during community consultations represent the generalized goal areas presented from the Draft Nunavut Land Use Plan (DNLUP). Goal areas do not represent specific designations and recommendations as layed out in the DNLUP. For more information on these areas please refer to the DNLUP and the Options and Recommendations document. Information collected in communities will be considered in conjunction with all other feedback when revising the DNLUP and will be part of the Consultation Record.



For Data Sources see Draft Nunavut Land Use Plan (DNLUP). Areas identified by community collected as part of the Nunavut Planning Commissions Community Engagement Strategy during the Mapping Sessions for the DNLUP on November 1 & 2, 2012. Maps were digitized at the Nunavut Planning Commission. To be used for illustration purposes only as part of the Draft Nunavut Land Use Plan Consultation Process.



ᓄᓇᓂᓄᓐ ᐸᓐᓇᓐᓐᓐ
Nunavunmi Parnaiyiit
Nunavut Planning Commission
Commission d'Aménagement du Nunavut

Chapter 3: Encouraging Conservation Planning

Encouraging Conservation Planning was one of five topics presented to and discussed by the participants during the information sharing and gathering sessions.

3.1 Areas presented to participants

During the information sharing and gathering sessions, participants were presented the following areas and issues as important to Encouraging Conservation Planning;

- National Parks Awaiting Full Establishment
- Proposed National Parks
- National Marine Conservation Areas
- Thelon Wildlife Sanctuary
- Migratory Bird Sanctuaries
- National Wildlife Areas
- National Historic Sites
- Territorial Historic Sites
- Heritage Rivers

The importance of these issues and areas to Encouraging Conservation Planning was not disputed by participants during the information sharing and gathering sessions.

3.2 Areas identified by participants

Additional areas and issues were identified by participants as important to Encouraging Conservation Planning during the information sharing and gathering sessions. These additional areas are.

The additional areas identified include;

- Moffat Inlet
- Sod Houses

- Historical Camps
- Heritage Rivers

3.3 Areas of importance to Encouraging Conservation Planning

Areas and issues discussed during the information sharing and gathering sessions as important to Encouraging Conservation Planning are illustrated on Map 2, including areas identified in the DNLUP and areas identified by the community. Scanned images of the maps on which community feedback was recorded can be found in Appendix 4.

Based on discussions with participants, the NPC understands that:

- The areas identified on Map 2 are considered by the Community to be important to Encouraging Conservation Planning.
- In these areas, the community would like the NLUP to encourage activities that support environmental protection and management needs, including wildlife conservation, protection and management.

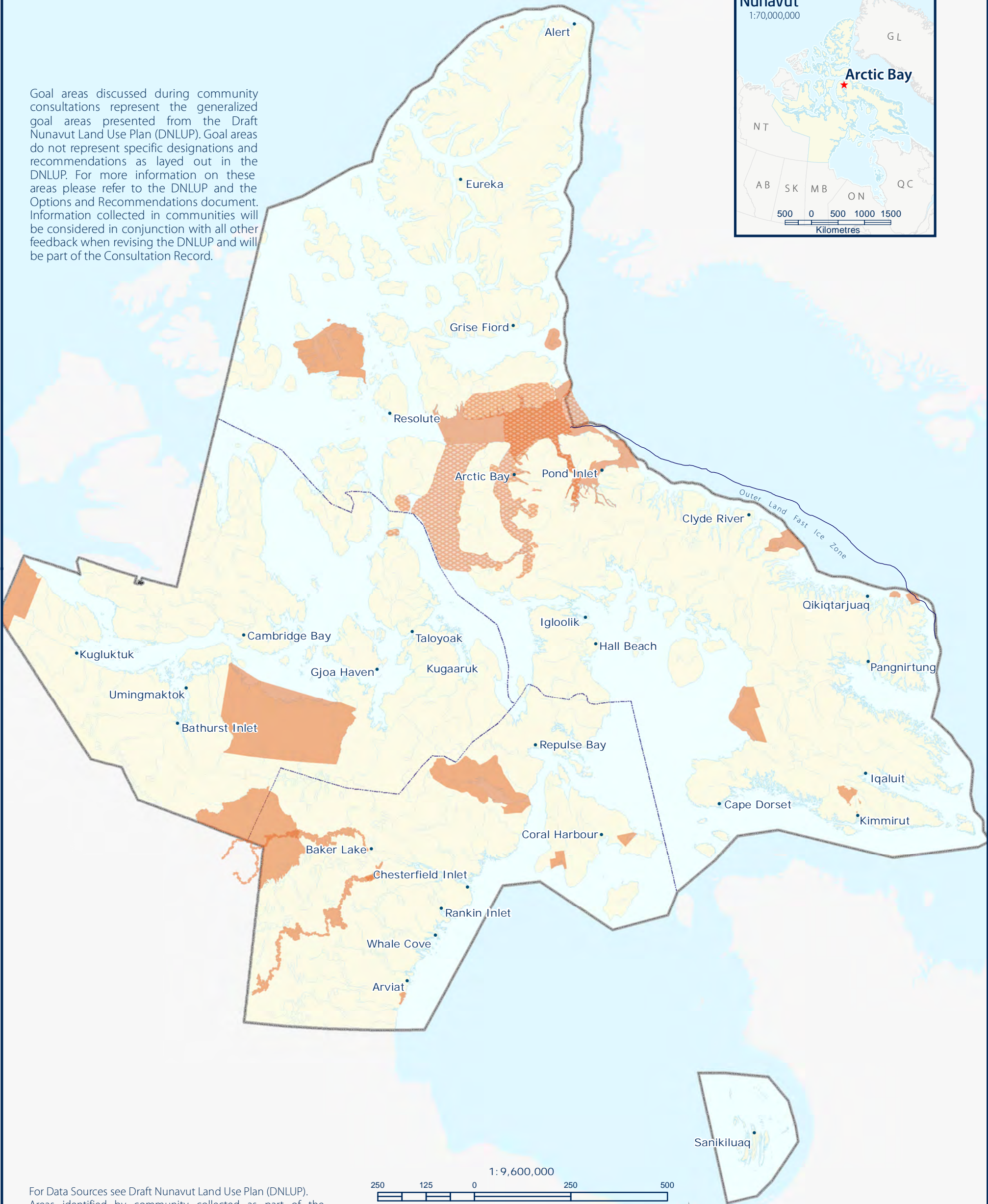
This feedback will be considered in conjunction with all other feedback when revising the DNLUP.



 ECP Goal areas from the DNLUP discussed during community consultations

 Additional ECP Goal areas identified during community consultations

Goal areas discussed during community consultations represent the generalized goal areas presented from the Draft Nunavut Land Use Plan (DNLUP). Goal areas do not represent specific designations and recommendations as layed out in the DNLUP. For more information on these areas please refer to the DNLUP and the Options and Recommendations document. Information collected in communities will be considered in conjunction with all other feedback when revising the DNLUP and will be part of the Consultation Record.



For Data Sources see Draft Nunavut Land Use Plan (DNLUP). Areas identified by community collected as part of the Nunavut Planning Commissions Community Engagement Strategy during the Mapping Sessions for the DNLUP on November 1 & 2, 2012. Maps were digitized at the Nunavut Planning Commission. To be used for illustration purposes only as part of the Draft Nunavut Land Use Plan Consultation Process.



ᓄᓇᓂᓄᓐ ᐸᓄᓐᓂᓄᓐ
Nunavunmi Parnaiyiit
Nunavut Planning Commission
Commission d'Aménagement du Nunavut



Projection: Canada Lambert Conformal Conic, NAD83
Produced by the Nunavut Planning Commission: (867)983-4625, npc@nunavut.ca
June-19-13

Chapter 4: Building Healthier Communities

Building Healthier Communities was one of five topics presented to and discussed by the participants during the information sharing and gathering sessions.

4.1 Areas presented to participants

During the information sharing and gathering sessions, participants were presented the following areas and issues as important to Building Healthier Communities;

- Areas of Community Interest
- Community Land Use
- Transportation Infrastructure
- Unincorporated Communities
- Alternative Energy Sources
- Community drinking water supplies
- Land remediation
- Northern Contaminated Sites Program
- Aerodromes
- Canadian Forces Station
- Northern Warning System sites

The importance of these issues and areas to Building Healthier Communities was not disputed by participants.

4.2 Areas identified by participants

Additional areas and issues were identified by participants as important to contributing to the goal of Building Healthier Communities during the information sharing and gathering sessions. These additional areas are;

- Polar Bear hunting areas

- Contaminated Sites
- Drinking Water

4.3 Areas of importance to Building Healthier Communities



Areas and issues discussed during the information sharing and gathering sessions as important to Building Healthier Communities are illustrated on Map 3, including areas identified in the DNLUP and areas identified by the community. Scanned images of the maps on which community feedback was recorded can be found in Appendix 4.

Based on discussions with participants, the NPC understands that:

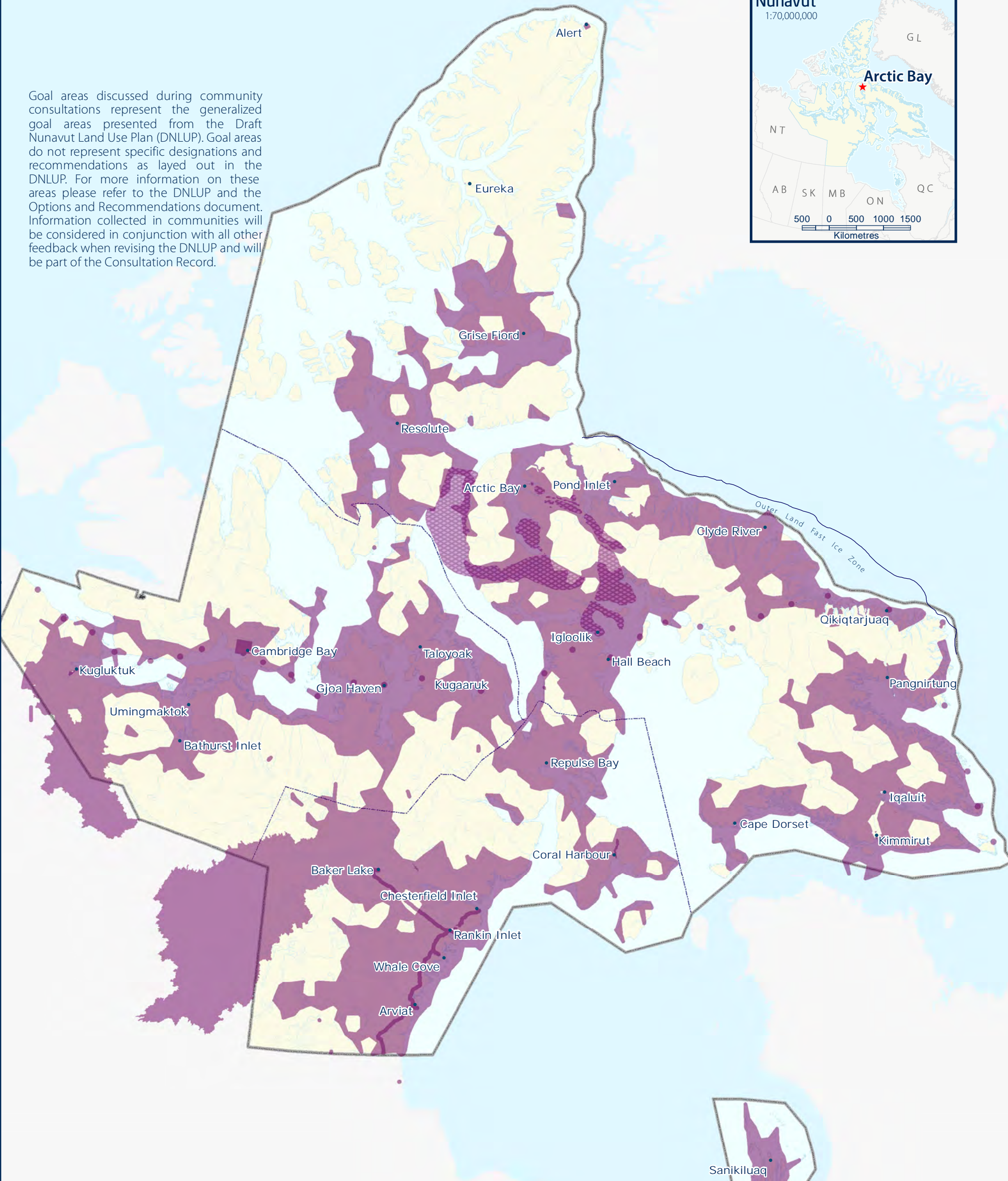
- The areas identified on Map 3 are considered by the Community to be important to Building Healthier Communities.
- In these areas, the community would like the NLUP to encourage activities that support community needs and cultural priorities.

This feedback will be considered in conjunction with all other feedback when revising the DNLUP.



-  BHC Goal areas from the DNLUP discussed during community consultations
-  Additional BHC Goal areas identified during community consultations

Goal areas discussed during community consultations represent the generalized goal areas presented from the Draft Nunavut Land Use Plan (DNLUP). Goal areas do not represent specific designations and recommendations as layed out in the DNLUP. For more information on these areas please refer to the DNLUP and the Options and Recommendations document. Information collected in communities will be considered in conjunction with all other feedback when revising the DNLUP and will be part of the Consultation Record.



For Data Sources see Draft Nunavut Land Use Plan (DNLUP). Areas identified by community collected as part of the Nunavut Planning Commissions Community Engagement Strategy during the Mapping Sessions for the DNLUP on November 1 & 2, 2012. Maps were digitized at the Nunavut Planning Commission. To be used for illustration purposes only as part of the Draft Nunavut Land Use Plan Consultation Process.



Projection: Canada Lambert Conformal Conic, NAD83
Produced by the Nunavut Planning Commission: (867)983-4625, npc@nunavut.ca
June-19-13

Chapter 5: Encouraging Sustainable Economic Development

Encouraging Sustainable Economic Development was one of five topics presented to and discussed by the participants during the information sharing and gathering sessions.

5.1 Areas presented to participants

During the information sharing and gathering sessions, participants were presented with the following areas important to Encouraging Sustainable Economic Development;

- Mineral Exploration and Production
- Oil and Gas Exploration
- Commercial Fisheries

The importance of these issues and areas to Encouraging Sustainable Economic Development was not disputed by participants during the information sharing and gathering sessions.

5.2 Areas identified by participants

Additional areas and issues were identified by participants as important to Encouraging Sustainable Economic Development during the information sharing and gathering sessions. The additional areas identified are;

- Mineral exploration
- Commercial fishing
- Beluga and Char Commercial fishing
- Polar Bear Tourism and Sport Hunting

5.3 Areas of importance to Encouraging Sustainable Economic Development

Areas and issues discussed during the information sharing and gathering sessions as important to Encouraging Sustainable



Economic Development are illustrated on Map 4, including areas identified in the DNLUP and areas identified by the community. Scanned images of the maps on which community feedback was recorded can be found in Appendix 4.

Based on discussions with participants, the NPC understands that:

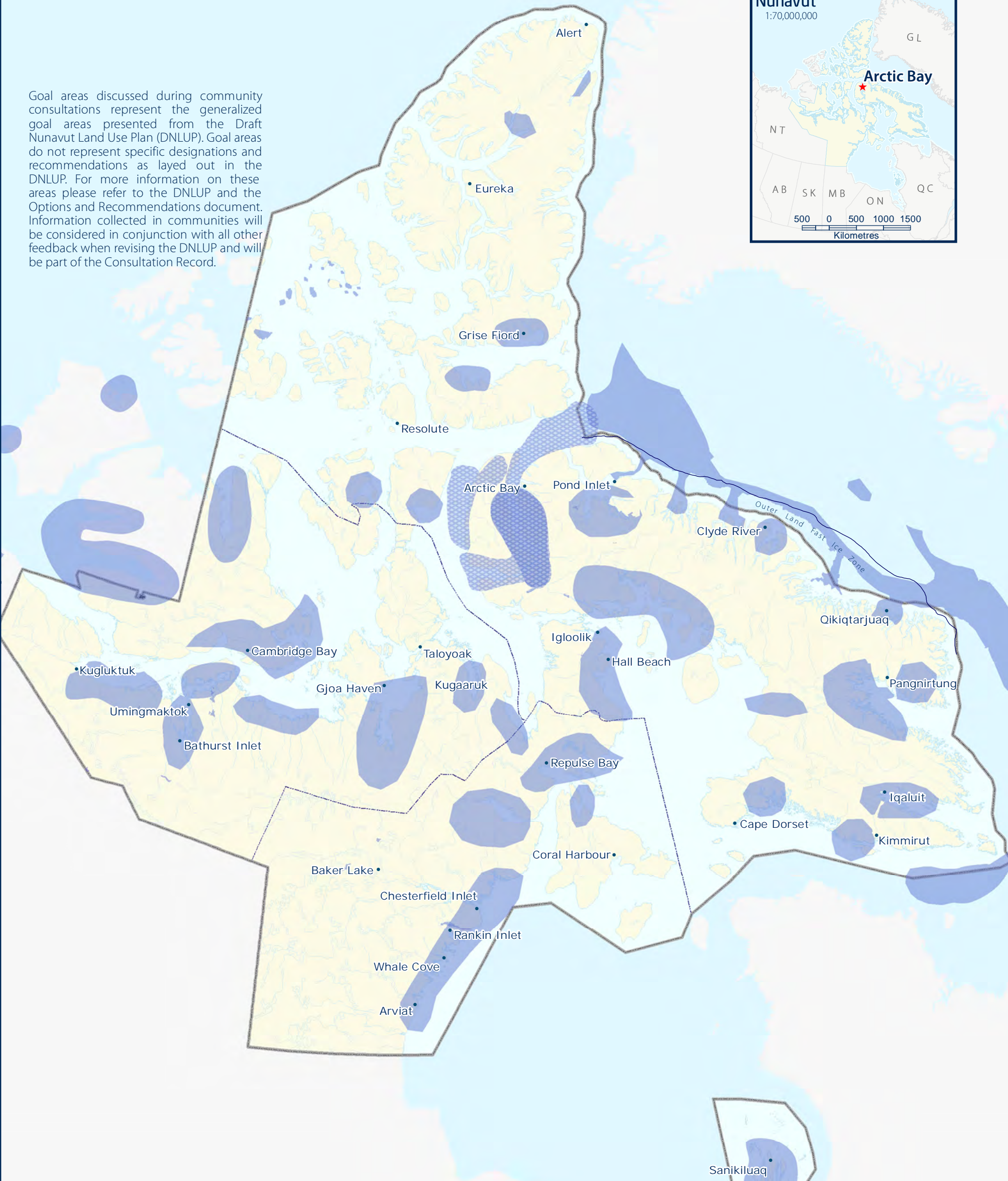
- The areas identified on Map 4 are considered by the Community to be important to Encouraging Sustainable Economic Development.
- In these areas, the community would like the NLUP to encourage activities that support economic opportunities and needs.

This feedback will be considered in conjunction with all other feedback when revising the DNLUP.



-  ESED Goal areas from the DNLUP discussed during community consultations
-  Additional ESED Goal areas identified during community consultations

Goal areas discussed during community consultations represent the generalized goal areas presented from the Draft Nunavut Land Use Plan (DNLUP). Goal areas do not represent specific designations and recommendations as layed out in the DNLUP. For more information on these areas please refer to the DNLUP and the Options and Recommendations document. Information collected in communities will be considered in conjunction with all other feedback when revising the DNLUP and will be part of the Consultation Record.



For Data Sources see Draft Nunavut Land Use Plan (DNLUP). Areas identified by community collected as part of the Nunavut Planning Commissions Community Engagement Strategy during the Mapping Sessions for the DNLUP on November 1 & 2, 2012. Maps were digitized at the Nunavut Planning Commission. To be used for illustration purposes only as part of the Draft Nunavut Land Use Plan Consultation Process.



Projection: Canada Lambert Conformal Conic, NAD83
Produced by the Nunavut Planning Commission: (867)983-4625, npc@nunavut.ca
June-19-13

6.1 Areas identified in the Draft Plan

The DNLUP identifies areas important for a variety of uses. These areas were presented to participants during the workshop as Mixed Use Areas. These areas, as they occur around the community, are illustrated on Map 5.

6.2 Areas identified by participants

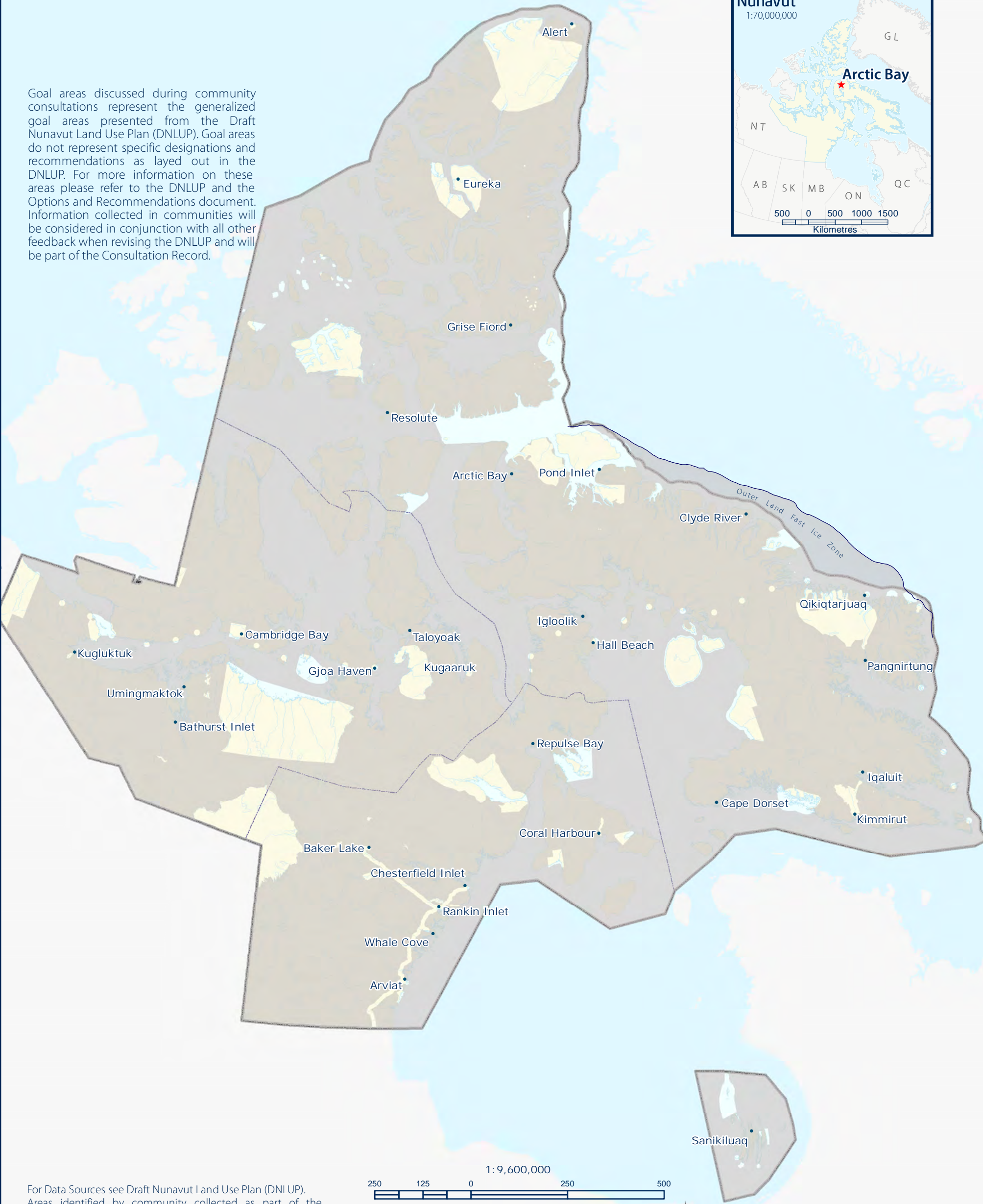
No additional areas were identified as Mixed Use by participants. However, some areas identified as Mixed Use in the DNLUP were considered by participants to require additional protection because of their particular qualities. These areas and the goals they are important for are identified on Map 6.





MU Goal areas from DNLUP discussed during community consultations

Goal areas discussed during community consultations represent the generalized goal areas presented from the Draft Nunavut Land Use Plan (DNLUP). Goal areas do not represent specific designations and recommendations as layed out in the DNLUP. For more information on these areas please refer to the DNLUP and the Options and Recommendations document. Information collected in communities will be considered in conjunction with all other feedback when revising the DNLUP and will be part of the Consultation Record.



For Data Sources see Draft Nunavut Land Use Plan (DNLUP). Areas identified by community collected as part of the Nunavut Planning Commissions Community Engagement Strategy during the Mapping Sessions for the DNLUP on November 1 & 2, 2012. Maps were digitized at the Nunavut Planning Commission. To be used for illustration purposes only as part of the Draft Nunavut Land Use Plan Consultation Process.



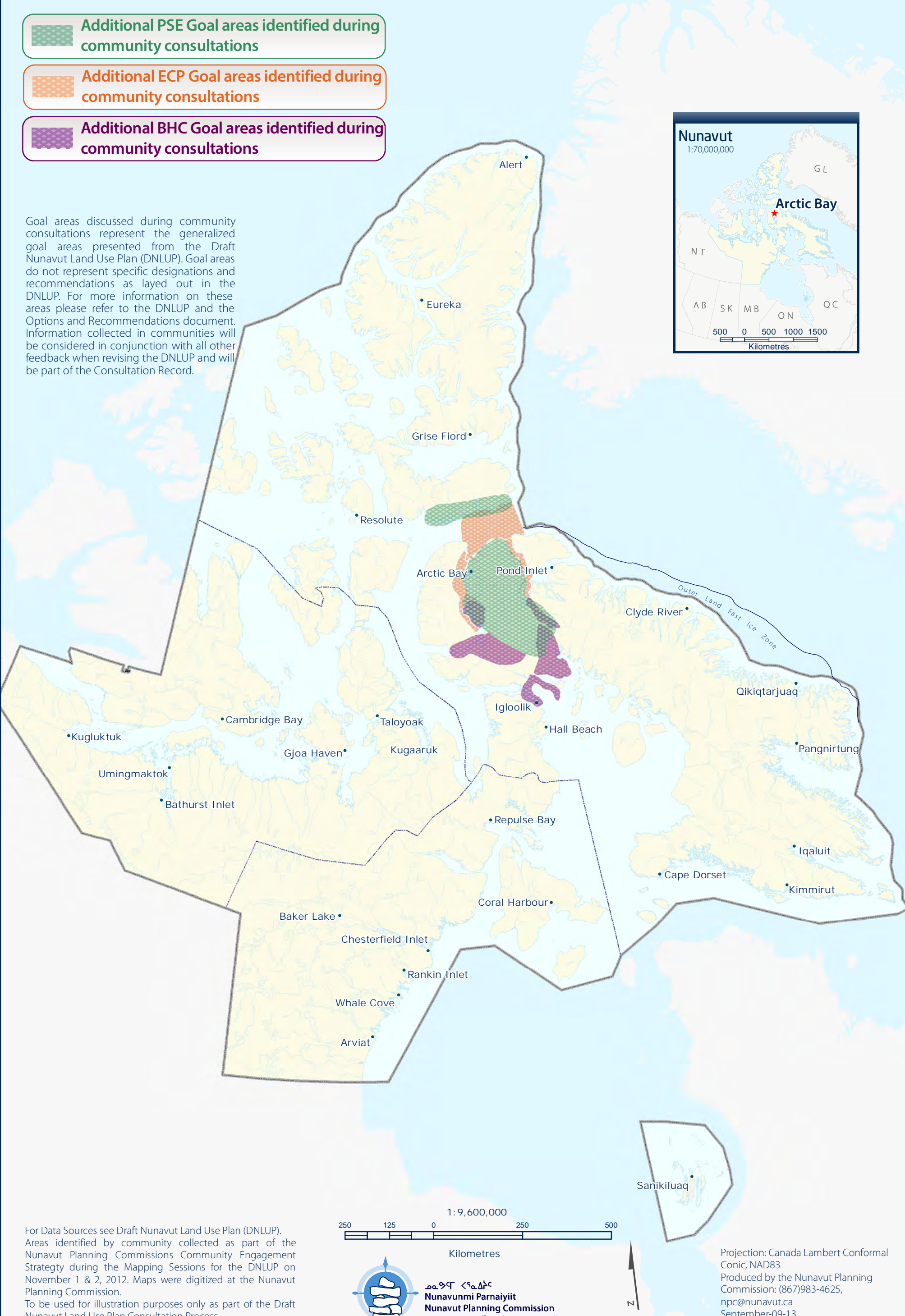
ᓄᓇᓂᓄᓐ ᐸᓐᓇᓂᓄᓐ
Nunavunmi Parnaiyiit
Nunavut Planning Commission
Commission d'Aménagement du Nunavut



Projection: Canada Lambert Conformal Conic, NAD83
Produced by the Nunavut Planning Commission: (867)983-4625, npc@nunavut.ca
June-19-13

-  Additional PSE Goal areas identified during community consultations
-  Additional ECP Goal areas identified during community consultations
-  Additional BHC Goal areas identified during community consultations

Goal areas discussed during community consultations represent the generalized goal areas presented from the Draft Nunavut Land Use Plan (DNLUP). Goal areas do not represent specific designations and recommendations as layed out in the DNLUP. For more information on these areas please refer to the DNLUP and the Options and Recommendations document. Information collected in communities will be considered in conjunction with all other feedback when revising the DNLUP and will be part of the Consultation Record.



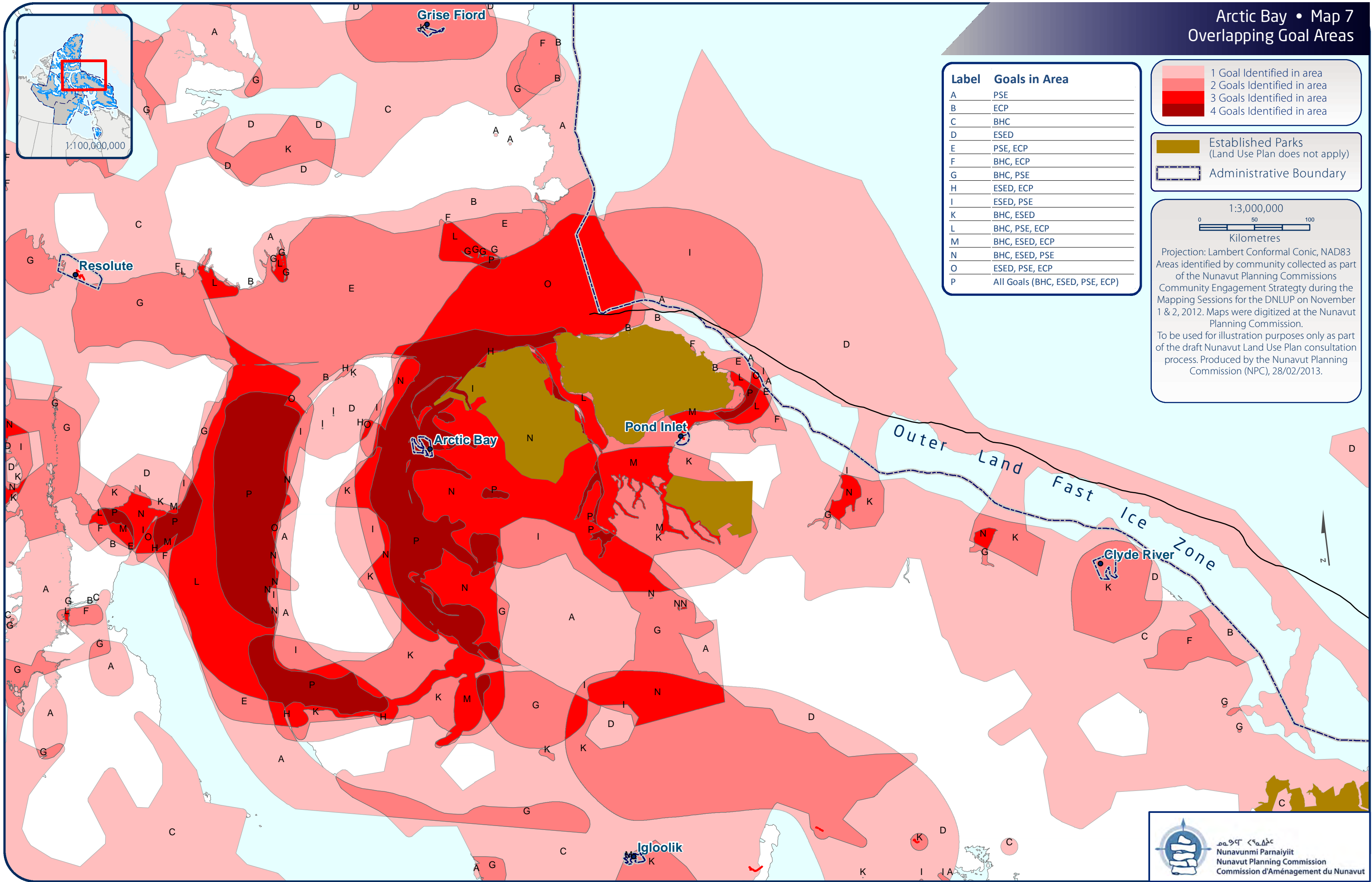
For Data Sources see Draft Nunavut Land Use Plan (DNLUP). Areas identified by community collected as part of the Nunavut Planning Commissions Community Engagement Strategy during the Mapping Sessions for the DNLUP on November 1 & 2, 2012. Maps were digitized at the Nunavut Planning Commission. To be used for illustration purposes only as part of the Draft Nunavut Land Use Plan Consultation Process.

7.1 Areas identified for multiple goals

All areas discussed with the community as important for a particular goal are shown on Map 7. In some instances, areas have been identified as important for multiple goals. These areas, and the specific goals they are important to, are also shown on Map 7. In these areas, the NPC will take all of the identified goals and all other feedback into consideration when revising the DNLUP.



Arctic Bay • Map 7 Overlapping Goal Areas



Appendix 1: Open House

During the open house, participants raised the following issues:

- Concerned with impacts from oil exploration in Greenland, including sonic depth sounders
- The identification of caribou areas on Baffin Island
- Need for a no-fly zone for helicopters in Moffat Inlet, including areas where ATVs are driven
- Interested in opportunities for jobs, and concerned with the level of unemployment since the closure of Nanisivik
- Concerned with the large number of flights disturbing caribou hunting
- Narwhal and seals are also important to the economy
- Concerned with the remediation of the old airport, including fuel in the ground
- The cleanup of Nanisivik



Appendix 2: Elected Officials Meeting

The elected officials meeting was attended by the Mayor and members of the Hamlet Council and HTO. During the meeting, participants raised the following issues:

- Impacts from shipping
- Oil spill management
- Oil and gas exploration and ship traffic in Lancaster Sound
- Protection of wildlife and marine mammals
- Concerns with ice breaking in Admiralty Inlet
- Concerns with cruise ships and pleasure craft in certain areas



Appendix 3: Questions and Answers

During the community workshop, there was a question and answer period, which included a discussion of the following topics:

- How effective will the land use plan be?
 - The Commission explained that the plan will be legally binding once approved.
- Why has it taken so long to produce a plan?
 - The Commission answered that the North Baffin and Keewatin Regional Land Use Plans are in place and the Commission has been working on a Nunavut wide plan for several years. The Commission intended to visit communities earlier, but government did not support previous attempts.
- Concerned with the decrease in numbers of seals.
- Can the land use plan place restrictions on the sea?
 - The Commission answered that the land use plan applies to the ocean as well.
- Concerned with cruise ships going to Moffat Inlet.
 - The Commission answered that the areas can be identified during the mapping session, and that the Nunavut Marine Council may also be able to consider the issue.
- Concerned with Russian claim in Lancaster Sound.
 - The Commission answered that Russia (and other countries) are concerned with passage through Lancaster Sound. The area of dispute regarding ownership between Russia and Canada is further north.
- Concerned with the protection of historic/cultural sites.
 - The Commission answered that the areas can be identified during the mapping session.



Appendix 4: Community Workshop Scanned Maps

Three groups completed the mapping session to identify important areas. This Appendix contains the maps that were used by participants to identify areas that are important to the following land use planning goals:

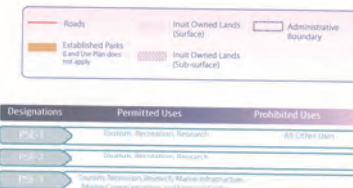
- Protecting and Sustaining the Environment
- Encouraging Conservation Planning
- Building Healthier Communities
- Encouraging Sustainable Economic Development
- Mixed Use

Also included on each map is a reference table that includes the specific values that were identified for the area.

During the mapping portion of the community workshop, the following concerns were raised that did not apply to a specific area that was identified on the maps:

- No areas should be identified for their importance to oil and gas


ARCTIC BAY WORKSHOP
Nov 1, 2012
AB



Reference Table for Recommendations	
INC-01	Search Information located in a Key Bird Habitat Site should be given priority to ensure the integrity of the site and the quality of the environment.
INC-02	Project impacts located in a Key Bird Habitat Site should be given priority to ensure the integrity of the site and the quality of the environment.
INC-03	Project impacts located in a Key Bird Habitat Site should be given priority to ensure the integrity of the site and the quality of the environment.
INC-04	Project impacts located in a Key Bird Habitat Site should be given priority to ensure the integrity of the site and the quality of the environment.

Code	Comments
XP01	All Marine mammals - Bowhead, All seals, only way to get from East to West through that area - Lancaster Sound. We are concerned for potential shipping activity, the potential oil and gas shipping activity. This area seems large, but this is where we know whales and seals migrate. How do you protect outside boundary if animals are coming from outside? We are leaving areas for Pond Inlet residents to identify
XP02	Kitiwaake birds sanctuary - They are seabirds with red feet. They live on that island. I realize that they have already been identified as sanctuary. It could be nesting grounds for different birds as well, like ducks. This area is very important for geese and other migrating bird
XP03	King Eider, Eider duck, Goose lay eggs there right along coast at Cape Crawford
XP04	Eider nesting grounds
XP05	Whole coast has little islands that are nesting grounds for little sea birds, arctic terns. We do not want to see high shipping activity





 Coordinate System: EPSG 42304 LCC
 Projection: Lambert Conformal Conic
 Datum: North American 1983
 False Easting: 0.0000
 False Northing: 0.0000
 Central Meridian: -95.0000
 Standard Parallel 1: 49.0000
 Standard Parallel 2: 77.0000
 Latitude Of Origin: 49.0000
 Units: Meter

For Land Use Designations and Recommendations sources see <http://land.nv.gov> and background material data source documents.

Hillshade created by utilizing Twiss method in Hillshade toolset (courtesy of ESRI) using Terrain bodies created by merging all 250,000 MTD shapefiles in Numbank, version 2.0.0, reflecting all water bodies 50 feet or less in land. Land outside of Numbank, courtesy of Geographic Administrative boundaries consist of NAD 83 coordinates, derived by the Nevada Department of Transportation, and the boundaries, combined with municipal boundaries, provided by Natural Resources Canada (Canada's data). The data is derived from the National Topographic Inventory, territorial parcels from the Government of Nunavut, Nunavut Parks from Parks Canada and data for areas within municipal boundaries from the Government of Nunavut.

This map is to be used for reference purposes only. Natural Resources Canada's data is not intended for use in any other way.

Any further use of this map or data therein must be authorized by consulting the Nunavut Planning Commission at: (867)783-8425 or email at npc@nunavut.ca

Thursday, October 24, 2013



Designations	Permitted Uses	Prohibited Uses
PSE 01	Tourism, Recreation, Research	All Other Uses
PSE 02	Tourism, Recreation, Research	All Other Uses
PSE 03	Tourism, Recreation, Research	All Other Uses
PSE 04	Tourism, Recreation, Research	All Other Uses
PSE 05	Tourism, Recreation, Research	All Other Uses
PSE 06	Tourism, Recreation, Research	All Other Uses
PSE 07	Tourism, Recreation, Research	All Other Uses
PSE 08	Tourism, Recreation, Research	All Other Uses
PSE 09	Tourism, Recreation, Research	All Other Uses
PSE 10	Tourism, Recreation, Research	All Other Uses
PSE 11	Tourism, Recreation, Research	All Other Uses
PSE 12	Tourism, Recreation, Research	All Other Uses
PSE 13	Tourism, Recreation, Research	All Other Uses

Code	Comments
XP01	Area where birds nest, important egg collection area
XP02	Area of Char, important wildlife area
XP03	Area where beluga whale are, important wildlife area
XP04	Area for seal, important wildlife area
XP05	Area where polar bear are, important wildlife area
XP06	Muskox, marine mammals, walrus, beluga, important wildlife area
XP07	Important Caribou Habitat
XP08	Caribou Habitat
XP09	Marine mammals, arctic char, salmon
XP10	Route for all the marine mammals
XP11	No gas, area preferred for a National Park
XP12	Polar bear, muskox, important wildlife area
XP13	Important bird habitat

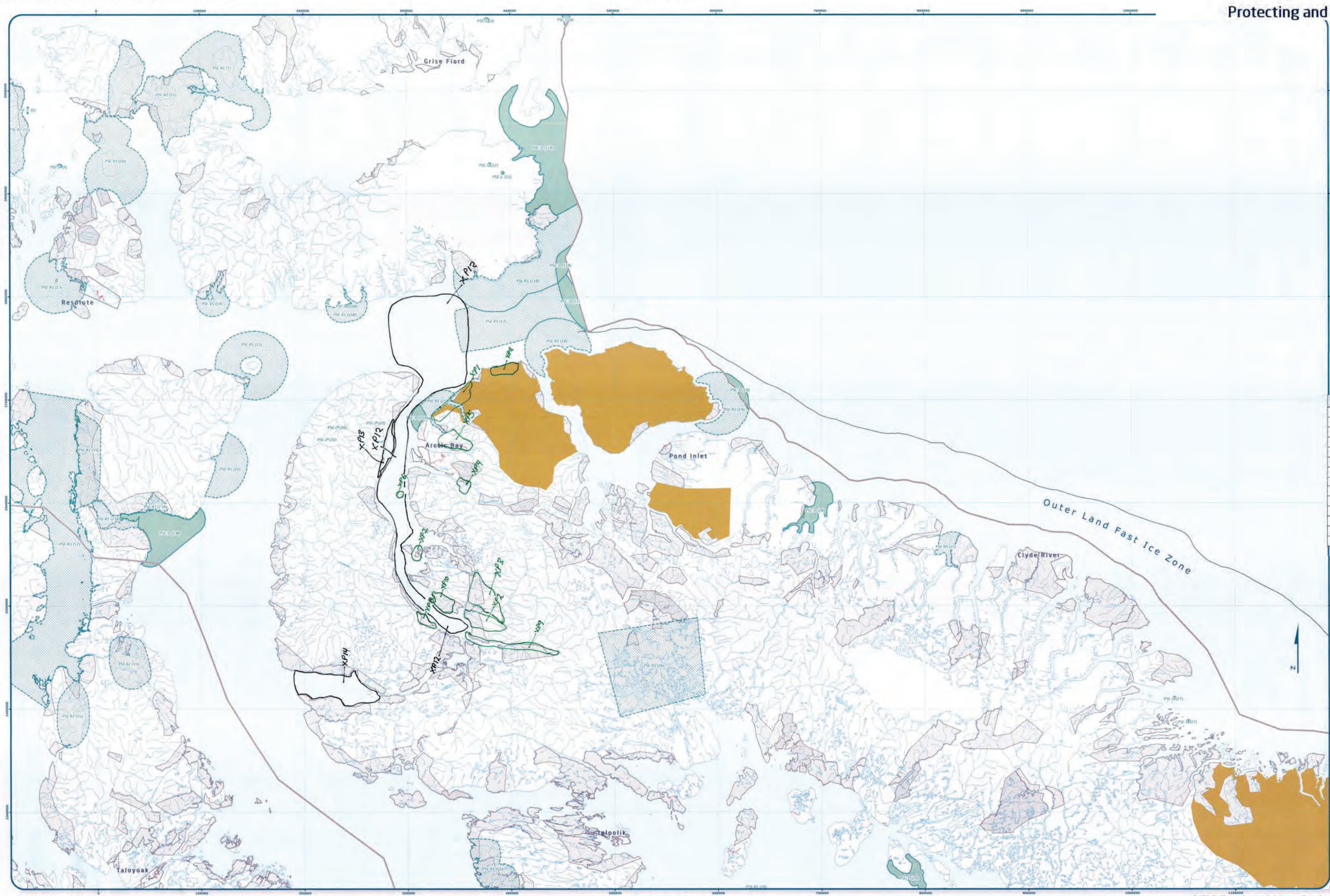
Code	Comments
XP01	Area where birds nest, important egg collection area
XP02	Area of Char, important wildlife area
XP03	Area where beluga whale are, important wildlife area
XP04	Area for seal, important wildlife area
XP05	Area where polar bear are, important wildlife area
XP06	Muskox, marine mammals, walrus, beluga, important wildlife area
XP07	Important Caribou Habitat
XP08	Caribou Habitat
XP09	Marine mammals, arctic char, salmon
XP10	Route for all the marine mammals
XP11	No gas, area preferred for a National Park
XP12	Polar bear, muskox, important wildlife area
XP13	Important bird habitat

Community: _____
Location: _____
Date: _____
Community Size: _____
Map # _____

Regulations of the Community apply to permission forms to conduct mapping activities as follows:

1. PSE 01	16
2. PSE 02	17
3. PSE 03	18
4. PSE 04	19
5. PSE 05	20
6. PSE 06	21
7. PSE 07	22
8. PSE 08	23
9. PSE 09	24
10. PSE 10	25
11. PSE 11	26
12. PSE 12	27
13. PSE 13	28
14. PSE 14	29
15. PSE 15	30

Signature of Mayor: _____
CONFIDENTIAL
Nunavut Planning Commission



Designations	Permitted Uses	Prohibited Uses
XP01	Conservation, Research	All other uses
XP02	Conservation, Research	Conservation, Research
XP03	Conservation, Research	Conservation, Research

Reference Table for Recommendations	
XP01	Project Proponent should conduct a full-scale baseline data collection and develop a management plan that addresses all potential impacts on the environment.
XP02	Project Proponent should conduct a full-scale baseline data collection and develop a management plan that addresses all potential impacts on the environment.
XP03	Project Proponent should conduct a full-scale baseline data collection and develop a management plan that addresses all potential impacts on the environment.
XP04	Project Proponent should conduct a full-scale baseline data collection and develop a management plan that addresses all potential impacts on the environment.
XP05	Project Proponent should conduct a full-scale baseline data collection and develop a management plan that addresses all potential impacts on the environment.
XP06	Project Proponent should conduct a full-scale baseline data collection and develop a management plan that addresses all potential impacts on the environment.
XP07	Project Proponent should conduct a full-scale baseline data collection and develop a management plan that addresses all potential impacts on the environment.
XP08	Project Proponent should conduct a full-scale baseline data collection and develop a management plan that addresses all potential impacts on the environment.
XP09	Project Proponent should conduct a full-scale baseline data collection and develop a management plan that addresses all potential impacts on the environment.
XP10	Project Proponent should conduct a full-scale baseline data collection and develop a management plan that addresses all potential impacts on the environment.
XP11	Project Proponent should conduct a full-scale baseline data collection and develop a management plan that addresses all potential impacts on the environment.
XP12	Project Proponent should conduct a full-scale baseline data collection and develop a management plan that addresses all potential impacts on the environment.
XP13	Project Proponent should conduct a full-scale baseline data collection and develop a management plan that addresses all potential impacts on the environment.
XP14	Project Proponent should conduct a full-scale baseline data collection and develop a management plan that addresses all potential impacts on the environment.

Code	Comments
XP01	Bird habitat
XP02	Bird habitat
XP03	Bird habitat
XP04	Bird habitat
XP05	Bird habitat
XP06	Bird habitat
XP07	Bird habitat
XP08	Bird habitat
XP09	Bird habitat
XP10	Bird habitat
XP11	Bird habitat
XP12	Bird habitat
XP13	Bird habitat
XP14	Bird habitat

Signature of the Community representative in person from the community mapping session as follows:

1.	26.
2.	27.
3.	28.
4.	29.
5.	30.
6.	31.
7.	32.
8.	33.
9.	34.
10.	35.
11.	36.
12.	37.
13.	38.
14.	39.
15.	40.

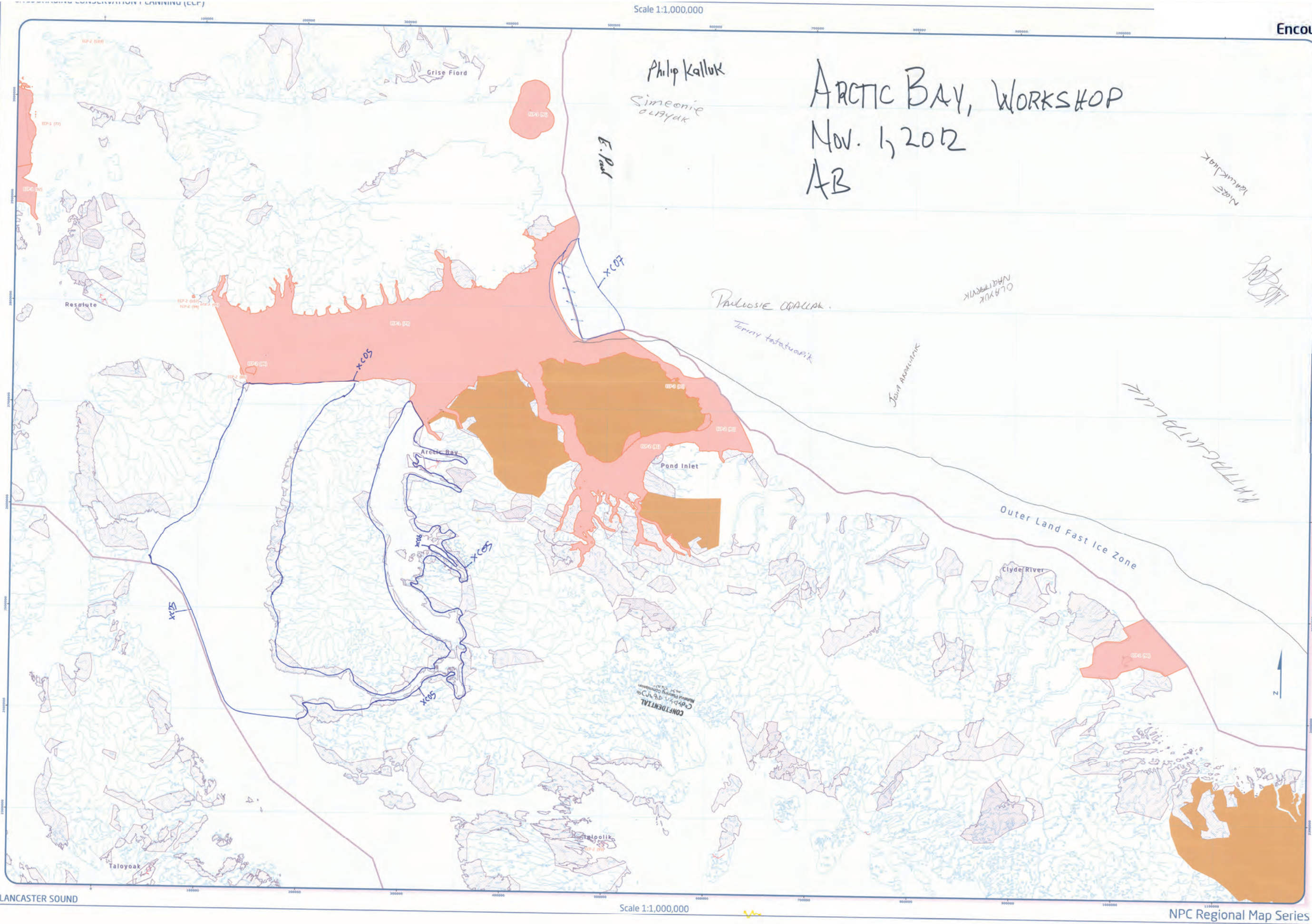
Signature of Mapper:



Coordinate System: EPSG 42304 LCC
Projection: Lambert Conformal Conic
Datum: North American 1983
False Easting: 0.0000
False Northing: 0.0000
Central Meridian: -95.0000
Standard Parallel 1: 49.0000
Standard Parallel 2: 77.0000
Latitude Of Origin: 49.0000
Units: Meter

For Land Use Designations and Recommendations sources see draft National Land Use Plan and background material data source documents.
This map is to be used for reference purposes only by the NPC.
Any further use of this map or data therein must be authorized by contacting the National Planning Commission at: (867) 788-4825 or email: nplanning@npc.ca
Thursday, October 04, 2012

Arctic Bay - Group 1 Results
Encouraging Conservation Planning



Designations	Permitted Uses	Prohibited Uses
ECR-1	Nature Recreation, Research	All Other Uses
ECR-2	Nature Recreation (Shaded)	
ECR-3	ECR Recommendations	
ECR-4	Reference Table for Recommendations	
ECR-5	Project Proponent should consult with the Inuit community and take into account the guidelines and values contained in the Inuit community's management plan.	

Code	Comments
XC05	No oil exploration - expand NMCA to include coastline all the way down Admiralty Inlet. Also on Prince Regent Inlet area. Should be all part of the Lancaster Sound NMCA
XC06	Moffat Inlet - HTO member mentioned this earlier - should be protected from cruise ships as well
XC07	NMCA should be extended to include this area

CONFIDENTIAL
This map is for internal use only and should not be distributed outside the organization.

Signature of the Community Representative: _____
Date: _____

Signature of the Mapping Technician: _____
Date: _____

Scale: 1:1,000,000

Coordinate System: EPSG 42304 LCC
Projection: Lambert Conformal Conic
Datum: North American 1983
False Easting: 0.0000
False Northing: 0.0000
Central Meridian: -95.0000
Standard Parallel 1: 49.0000
Standard Parallel 2: 79.0000
Latitude Of Origin: 49.0000
Units: Meter

Working Draft Sub-regional map data sources:
For Land Use Designations and Recommendations sources see draft Nunavut Land Use Plan and background
Habitat created by utilizing Swiss method in habitat toolbox courtesy of ESRI user forum. Water bodies
created by digitizing all 2:250,000 scale maps in Nunavut, version 2.0, and selecting all water bodies over
50 hectares in size. Land outside of Nunavut, courtesy of Geomatics Canada. Administrative boundaries of NRC
boundaries, created by digitizing Regional Inuit Association jurisdiction, combined with municipal
boundaries, provided by Natural Resources Canada. Land use data, Inuit Owned Lands, courtesy of Nunavut
Government. Territorial parks from the Government of Nunavut. National Parks from Parks Canada.
Data for areas within municipal boundaries obtained from Natural Resources Canada. Land use data
from the Nunavut Planning Commission. This map is to be used for reference purposes only by the NPC.
Any further use of this map or data therein should be authorized by the Nunavut Planning
Commission at (867) 981-4625 or email nuplanning@npc.nu

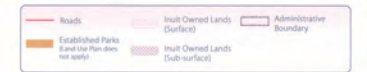
Scale 1:1,000,000

NPC Regional Map Series

October 2012

ENCOURAGING CONSERVATION PLANNING (ECP)

Scale 1:1,000,000



Designations	Permitted Uses	Prohibited Uses
ECP-1	Tourism, Recreations, Research	All Other Uses
ECP-2	Tourism, Recreation, Research	

ECP Recommendation

Reference Table for Recommendations

ECP#1 Project Proponer located in and/or near a Heritage River should take into account the guidelines and criteria contained in the Heritage River's management plan.

Code	Comments
XC14	Historic area, contains sod houses, important for historical reasons and protection
XC15	Historic area, contains sod houses, important for historical reasons and protection
XC16	Historic area, contains sod houses, important for historical reasons and protection
XC17	Historic area, contains sod houses, important for historical reasons and protection
XC18	A lot of historic sites with sod houses,
XC19	Historical river site/heritage river
XC20	Historical river site/heritage river
XC21	Historic area, contains sod houses and heritage rivers
XC22	Historic area, contains sod houses
XC23	Historic area, contains sod houses
XC24	Historic area, contains sod houses
XC25	Historic area, contains sod houses
XC26	Historic area, contains sod houses
XC27	Historic area, contains sod houses
XC28	Historic area, contains heritage river

<div> <div> CONFIDENTIAL </div> <div> Community Confidentiality Survey Local and Migrant Service </div> </div> <div> 78 </div> <div> 5/20/21 </div>	
Community:	<i>Antioch</i>
Location:	
Region:	
Date:	<i>Nov. 19, 2020</i>
Community Host:	
MCS #	
Signatures of the Community signify its permission to be included in reporting and in information	
1.	<i>James P. Dole</i>
2.	<i>John</i>
3.	<i>James</i>
4.	<i>James P. Dole</i>
5.	<i>James P. Dole</i>
6.	<i>James P. Dole</i>
7.	
8.	
9.	
10.	
11.	
12.	
13.	
14.	
15.	
Signatures of Migrant: <i>Polina</i>	
<div> <div> CONFIDENTIAL </div> <div> Cody P. Dole Nursing Facility Commission </div> </div> <div> 2021 </div> <div> 5/20/21 </div>	

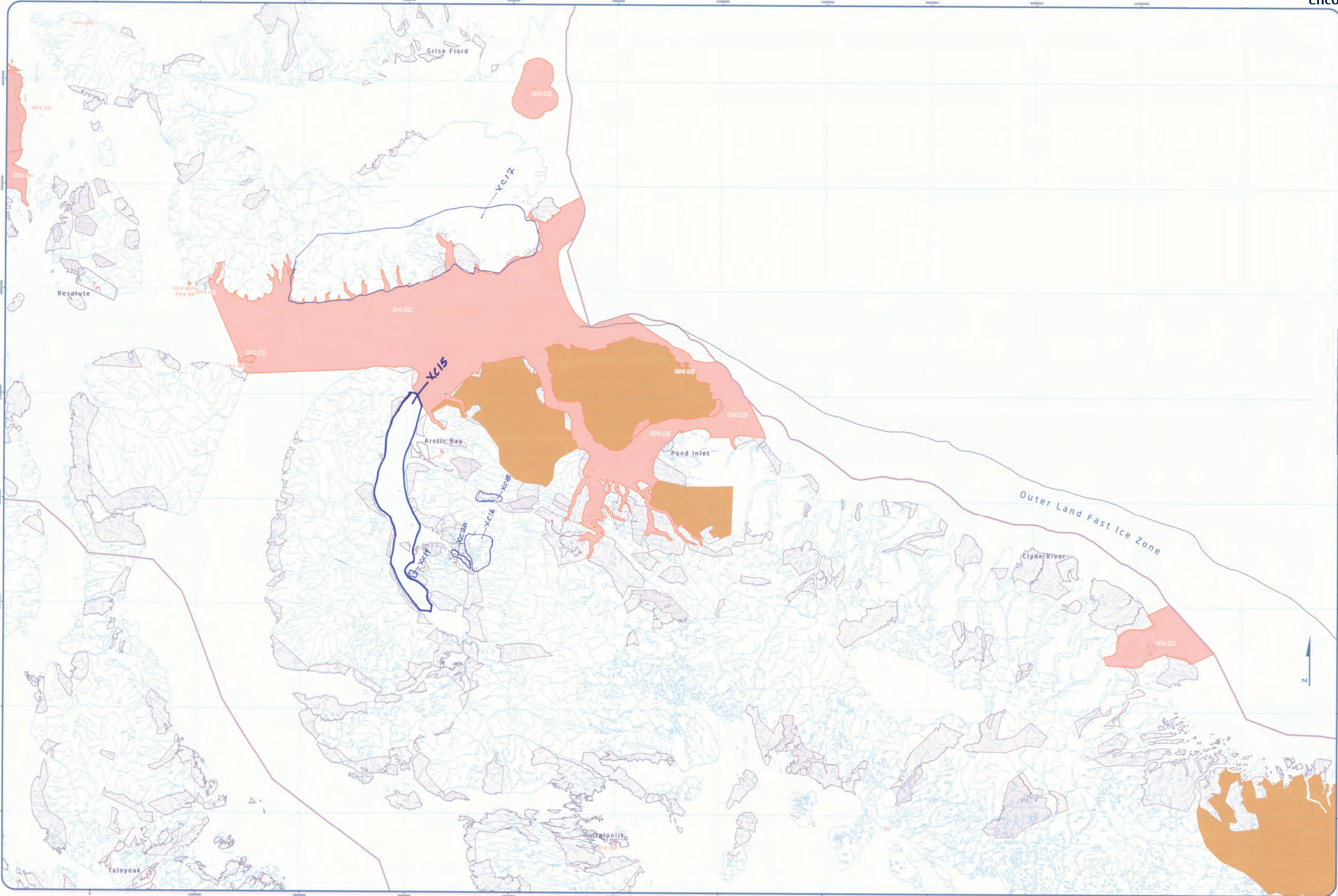
Coordinate System: EPSG:42304 LCC
Projection: Lambert Conformal Conic
Datum: North American 1983
False Easting: 0.0000
False Northing: 0.0000
Central Meridian: -95.0000
Standard Parallel 1: 49.0000
Standard Parallel 2: 77.0000
Latitude Of Origin: 49.0000

MAPInfo Working Draft Sub-regional map data sources
For Land Use Designations and Demarcations sources see the Land Use Plan and boundaries
Material data source documents

Mitigated created by utilizing Sertis' template in MapInfo toolbar (working draft) of ESRI user forum. Source materials provided by merging a 1:250,000 MTRB polygons (version 2.1.2) and selecting all settlements with a population of 50 hectares in size. Land outside of Norway, country of Georgia, Administrative boundaries consist of NPA district regional boundaries, created to reflect Regional Self-Administration boundaries, combined with municipal boundaries provided by Natural Resources Canada (Atlantic Data, Inuit Owned Lands country of Nunavut, Nunavut Incorporated, Territorial parks from the Government of Nunavut, National Parks from Parks Canada). Data for areas within municipal boundaries obtained from Natural Resources Canada (Canadian Data Catalogue) and used in the data set. All data is in the form of shapefiles and is available upon request.

Any further use of this map or data submission must be authorized by contacting the Nunavut Planning Commission at 1-887-779-8143 or in person at the Nunavut Planning Commission, P.O. Box 100, Yellowknife, NT, Canada X1A 2S6. Friday, October 12, 2012

Scale 1:1,000,000



Designations	Permitted Uses	Prohibited Uses
ECP-1	Mineral Extraction, Research	All Other Uses
ECP-2	Travelling, Recreation, Research	

Code	Comments
XC15	Would only like to see community use
XC16	this is an area where we all go for spring break camping full of wildlife including Musk-Ox
XC17	lot of fishing going on in this place during summer, winter and early spring
XC18	good grounds for hunting and should be preserved as such.
XC19	good grounds for hunting and should be preserved as such.
XC20	community use for wildlife and camping.

Code	Comments
XC15	Would only like to see community use
XC16	this is an area where we all go for spring break camping full of wildlife including Musk-Ox
XC17	lot of fishing going on in this place during summer, winter and early spring
XC18	good grounds for hunting and should be preserved as such.
XC19	good grounds for hunting and should be preserved as such.
XC20	community use for wildlife and camping.

Code	Comments
XC15	Would only like to see community use
XC16	this is an area where we all go for spring break camping full of wildlife including Musk-Ox
XC17	lot of fishing going on in this place during summer, winter and early spring
XC18	good grounds for hunting and should be preserved as such.
XC19	good grounds for hunting and should be preserved as such.
XC20	community use for wildlife and camping.

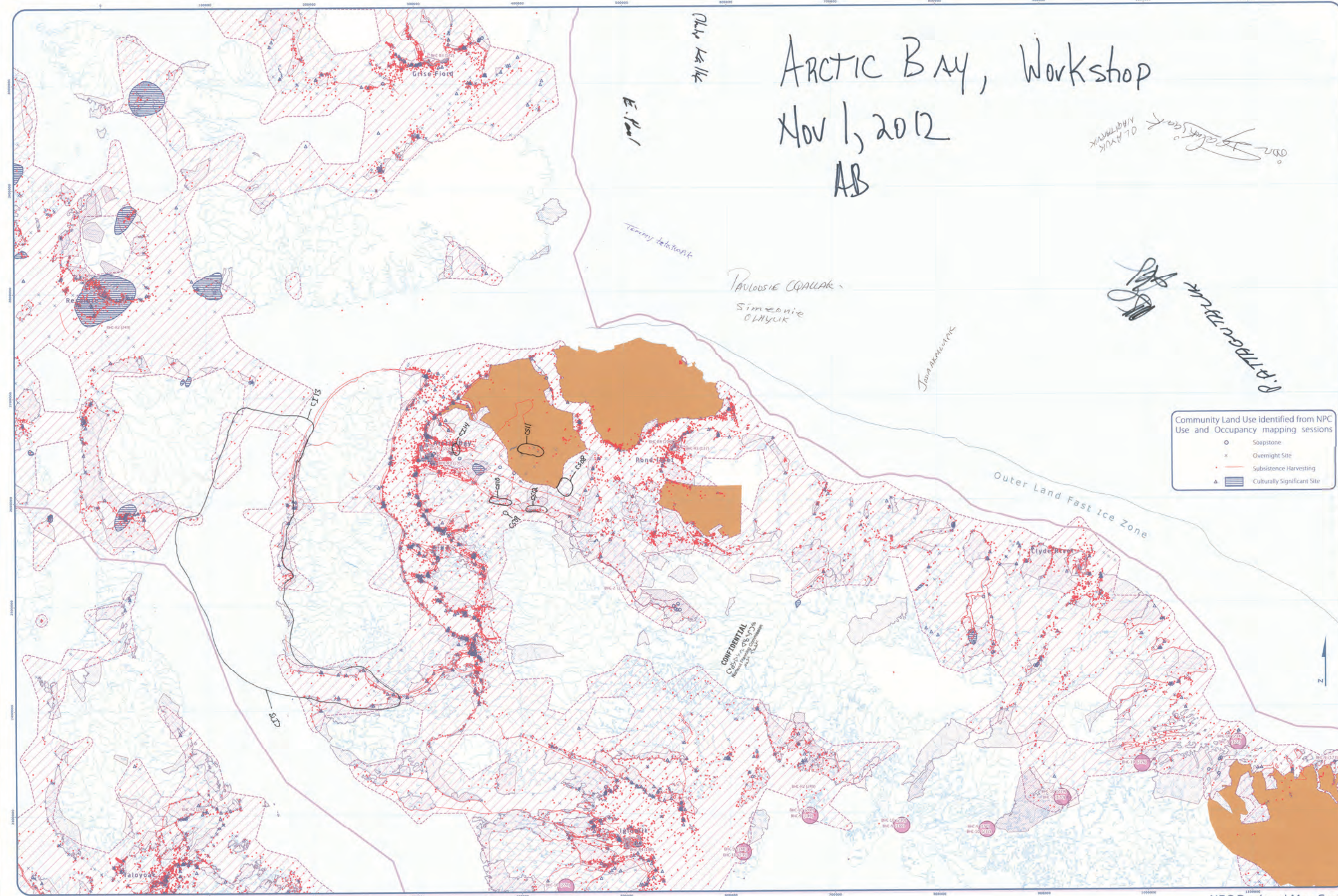
Code	Comments
XC15	Would only like to see community use
XC16	this is an area where we all go for spring break camping full of wildlife including Musk-Ox
XC17	lot of fishing going on in this place during summer, winter and early spring
XC18	good grounds for hunting and should be preserved as such.
XC19	good grounds for hunting and should be preserved as such.
XC20	community use for wildlife and camping.

Signature of Mapper: [Signature]



Coordinate System: EPSG 42304 UTM
Projection: Lambert Conformal Conic
Datum: North American 1983
False Easting: 500000
False Northing: 0.0000
Central Meridian: -95.0000
Standard Parallel 1: 49.0000
Standard Parallel 2: 79.0000
Latitude Of Origin: 49.0000
Units: Meter

Working Draft Sub-regional map data sources:
For Land Use Designations and Recommendations sources see draft Nunavut Land Use Plan and background information data source documents.
Intimate created by utilizing Swiss method in InuitMap toolset courtesy of ESRU user forum. Water bodies were created by merging an L250,000 scale map of Nunavut, version 2.0, and selecting all water bodies over 50 hectares in size. Land outside of Nunavut, courtesy of Geomatics, Administrative boundaries courtesy of NRC. Regional boundaries, intended to reflect Regional Trust Association jurisdictions, combined with municipal boundaries, provided by Natural Resources Canada. Inuit Owned Lands courtesy of Nunavut Tungasuvuaq Incorporated. Territorial parks from the Government of Nunavut, National Parks from Parks Canada. Data for areas within municipal boundaries obtained from Natural Resources Canada. This map is to be used for reference purposes only by the NPC. Data for areas within municipal boundaries obtained from Natural Resources Canada. This map is to be used for reference purposes only by the NPC. Data for areas within municipal boundaries obtained from Natural Resources Canada. This map is to be used for reference purposes only by the NPC.



Legend:

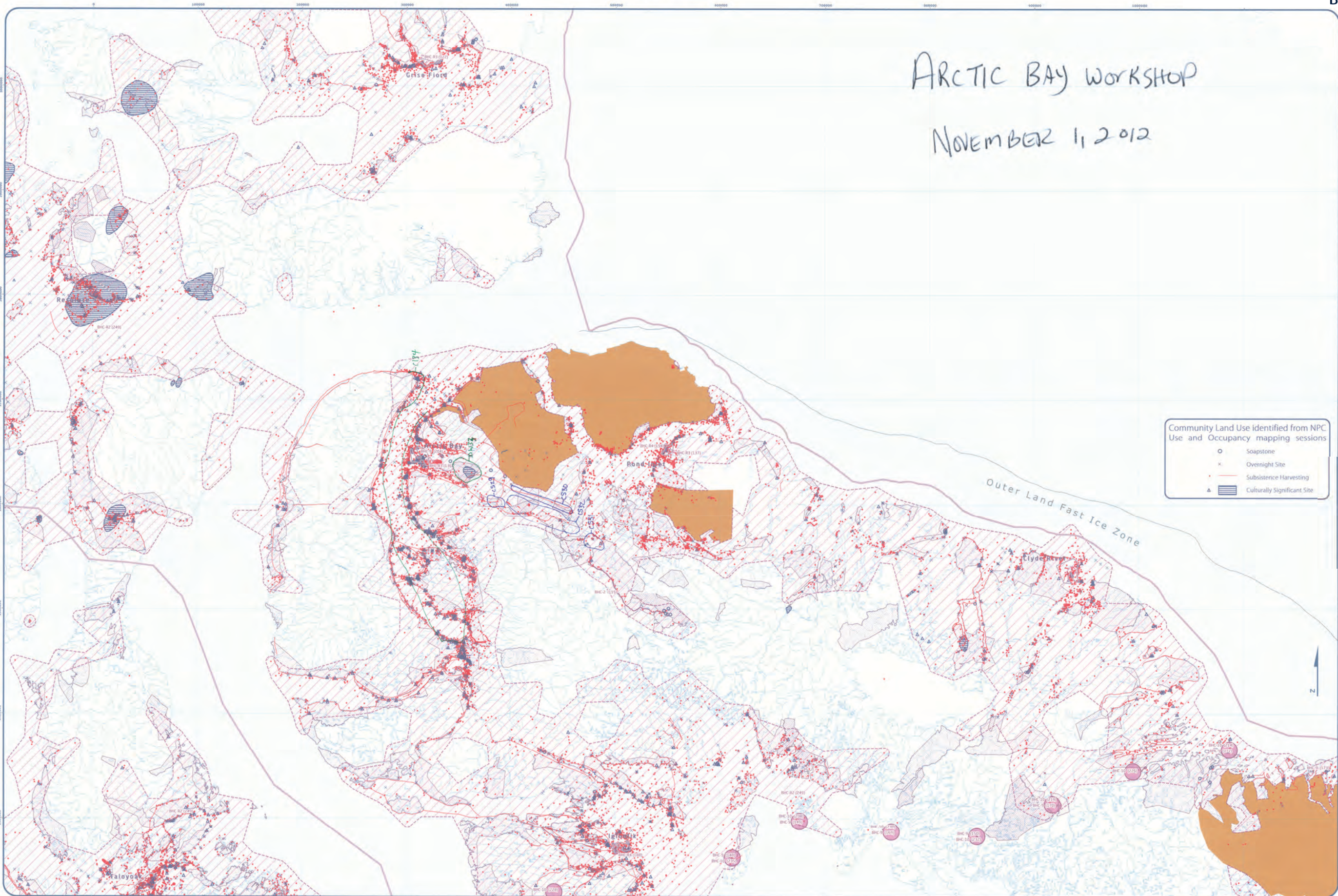
- Roads
- Established Parks (and Use Plan does not apply)
- Inuit Owned Lands (Surface)
- Inuit Owned Lands (Sub-surface)
- Administrative Boundary

Designations	Permitted Uses	Prohibited Uses
DRK-1	Roads, Railways, Utilities and Canals	
DRK-2	Roads, Railways, Utilities and Canals	
DRK-3	All uses except those Prohibited	Mining
DRK-4	Hydro electrical and related infrastructure	
DRK-5	Science, Recreational and Research, Municipal Services	
DRK-6	Municipal services	All Other Uses
DRK-7	Municipal services	
DRK-8	Reclamation and Reclamation Activities	All Other Uses
DRK-9	Reclamation and Reclamation Activities, DNO Operations and Activities	All Other Uses
DRK-10	All Other Operations and Activities	All Other Uses

Reference Table for Recommendations	
附表 1-1	Project Proposals located in the In-lake Risk Area of Inverness should take into account impacts on the cultural value of the area.
附表 1-2	Project Proposals located in areas of traditional land use should take into account impacts on the cultural value of the area.
附表 1-3	Project Proposals located in a community water supply watershed should take into account impacts on the quality and quantity of community drinking water.
附表 1-4	Project Proposals located in a sensitive Aquatic Ecosystem should take into account impacts on environmental safety.

Code	Comments
CS08	Oil drums - old, scattered, from mining exploration
CS09	Old airstrip and oil drums all over land near the lake
CS10	Old oil drums - more than one, used to be old exploration camp
CS11	Oil drums - used to be old mining site, many barrels
CS12	Old airstrip right along that river
CI13	Polar Bear hunting areas along whole coast from Inlet
CI14	Nanisivik Creek - is it safe to drink? Dirty water in the watershed, Travel route during winter

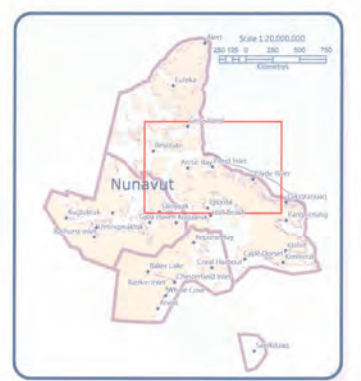
[illegible]



ARCTIC BAY WORKSHOP
NOVEMBER 1, 2012

Community Land Use identified from NPC
Use and Occupancy mapping sessions

- Soapstone
- x Overnight Site
- Subsistence Harvesting
- △ Culturally Significant Site



Designations	Permitted Uses	Prohibited Uses
BHC-1	Roads, Railways, Utilities and Corridors	
BHC-2	Roads, Railways, Utilities, and Corridors	
BHC-3	All uses except those Prohibited	Mining
BHC-4	Hydro-electrical and spatial infrastructure	
BHC-5	Tourism, Recreation and Research, Municipal Services	
BHC-6	Municipal Services	All Other Uses
BHC-7	Municipal Services	
BHC-8	Remediation and Remediation Activities	All Other Uses
BHC-9	Remediation and Remediation Activities, DND Operations and Activities	All Other Uses
BHC-10	DND Operations and Activities	All Other Uses

Code	Comments
C129	Contaminated Site, fuel/propane
C130	Contaminated Site, fuel/propane, oil generators from mine site in 1965
C131	Contaminated Site, fuel/propane, oil generators from mine site in 1965
C132	Contaminated Site, fuel/propane, oil generators from mine site in 1965
CS33	Water supply, no development, but don't restrict traditional activities, land use
CS34	Beluga whale, arctic char, seal, bird eggs

Code	Comments
C129	Contaminated Site, fuel/propane
C130	Contaminated Site, fuel/propane, oil generators from mine site in 1965
C131	Contaminated Site, fuel/propane, oil generators from mine site in 1965
C132	Contaminated Site, fuel/propane, oil generators from mine site in 1965
CS33	Water supply, no development, but don't restrict traditional activities, land use
CS34	Beluga whale, arctic char, seal, bird eggs

Arctic Bay
Map 4 of 5

CONFIDENTIAL



Designations	Permitted Uses	Prohibited Uses
ESED 1	Mining, Reclamation and Reclamation Activities, Utilities and Landfills	
ESED 2	For and use, reclamation and Reclamation Activities	
ESED 3	Reference Table for Recommendations	
ESED 4	Reference Table for Recommendations	

Code	Comments
XD16	Areas where helicopters are dropping of stakes - scattering the caribou. Low flying helicopters. This area is important for Caribou habitat, mining companies fly round, put stakes all over. I think the flying in this area is the reason why Caribou left.
XD17	Diamond exploration happening here



Community Planning Commission
Arctic Bay
Region: Northwest Territories
Community Name: Arctic Bay
Map #

Signature of the Community as a participant
Name to conduct mapping session as a participant

Signature of the Mapper: [Signature]

CONFIDENTIAL

Coordinate System: EPSG 42304 LCC
Projection: Lambert Conformal Conic
Datum: North American 1983
False Easting: 0.0000
False Northing: 0.0000
Central Meridian: -95.0000
Standard Parallel 1: 49.0000
Standard Parallel 2: 77.0000
Latitude Of Origin: 49.0000
Units: Meter

Working Draft: This regional map data sources
For Land Use Designations and Recommendations sources see draft Nunavut Land Use Plan and background
Hatched created by utilizing Swiss method in Hatched toolbox courtesy of ESDU use results better below
50 hectares in size. Land outside of Nunavut, courtesy of Geographic Information Systems (GIS) data
boundaries, created to reflect Regional Inuit Association jurisdiction, combined with municipal
data for areas within municipal boundaries obtained from Natural Resources Canada (NRC) data
This map is to be used for reference purposes only by the NPC
Commission at 1867/881-4625 or email info@npc.nu.na
Tuesday October 05, 2012



Legend:

- Roads
- Inuit Owned Lands (Surface)
- Administrative Boundary
- Established Parks (and/or features not apply)
- Inuit Owned Lands (Sub-surface)

Designations	Permitted Uses	Prohibited Uses
ESD-1	Mining, Mineralization and Associated Activities, Roads, Railways, Utilities and Canals.	
ESD-2	Oil and gas Exploration and Production Activities.	

ESD Recommendation

ESD-1	Reference Table for Recommendations
ESD-1	Project impacts should be as well as potential future impacts (based on best case impact) to be well within the potential of the area.

Code	Comments
XD35	Beluga, Char for commercial harvesting. Polar bear important to tourism for sports hunts
XD36	Beluga, Char for commercial harvesting. Polar bear important to tourism for sports hunts

**National Planning Commission
Community Consultation File
Land Use Mapping System**

Community:
Location:
Project:
County: *North*
Meeting: *Nov. 1, 2016*
Map #:

**Signatures of the Community (only in a position
to be considered for the following preferences)**

1.	<i>Dr. Rajeev</i>	14.	
2.	<i>Shree</i>	15.	
3.	<i>Rajawanshi</i>	16.	
4.	<i>Dr. Rajawanshi</i>	17.	
5.	<i>T. Ganesalingam</i>	18.	
6.	<i>Dr. C. S. R. S. S.</i>	19.	
7.		20.	
8.		21.	
9.		22.	
10.		23.	
11.		24.	
12.		25.	
13.		26.	
14.		27.	
15.		28.	
16.		29.	
17.		30.	

Signature of Mayor: *Delella*

CONFIDENTIAL
செல்லா

National Planning Commission
Land Use Mapping System

CONFIDENTIALITY IS ASSURED


 National Planning Commission
 Ministry of Natural Resources and Environmental Conservation
 Republic of Armenia

Coordinate System: EPSG: 42394 AZCC
 Projection: Lambert Conformal Conic
 Datum: North American 1983
 False Easting: 0.000000
 False Northing: 0.000000
 Standard Parallel: 95.000000
 Central Meridian: 1.000000
 Standard Parallel 2: 77.000000
 Latitude Of Origin: 49.000000
 Units: Meter

Working from the State and background
 information data and documents
 on the territory of the Republic of Armenia
 50 hectares on the Land outside of the
 country, comprising of Georgia, Administrative boundaries consist of
 that regional boundaries, related to effect Region that Association includes, combined with
 boundaries, provided by Natural Resources Bureau (state data), their Owned Lands (not of Natural
 Resources Government). Territorial parts from the Government of Natural Resources, Only parts from Parks
 and for areas within municipal boundaries (state data).

This map is to be used for reference purposes only. The
 Government is not to be held responsible for any errors or
 omissions.




Any further use of this Map and its content
 without the written permission of the
 Government is prohibited.

01/07/2018 4:55:25 or email: info@armaplanet.com
 01/07/2018 4:55:25

Arctic Bay – Group 3 Results





 Roads
  Inuit Owned Lands (Surface)
  Administrative Boundary

 Established Parks (and the Plan does not apply)
 Inuit Owned Lands (Sub-surface)

Designations	Permitted Uses	Prohibited Uses
ART 1	RE USES	

Code	Comments
IU18	We can only identify land by name. Big mountains inland - calving ground for caribou in mountains. High places in the mountains
IU19	Caribou migration happens here, so the area should be expanded here. All along the coast - goose nesting and caribou calving all along same area. This whole area is used by everything relying on the land's resources, caribou, fish, migrating birds
IU20	Should expand area again because it includes summer caribou hunts here. During the summer season it is very important for hunting caribou, egg picking.

[illegible]

Neighborhood Planning Commission
Community Consultation: Final
Land Use Mapping Session


Community: North Bay
Region: _____
Date: Nov 1, 2012 North Bay
Community that
Map # 15

Signatures of the Community (only, if permission
has to conduct mapping session as per form 1)

1	16
2	17
3	18
4	19
5	20
6	21
7	22
8	23
9	24
10	25
11	26
12	27
13	28
14	29
15	30

Signature of Member: _____

CONFIDENTIALITY STAMP


 Coordinate System: EPSG 42304 LCC
 Projection: Lambert Conformal Conic
 Datum: North American 1983
 False Easting: 0.0000
 False Northing: 0.0000
 Central Meridian: -95.0000
 Standard Parallel 1: 49.0000
 Standard Parallel 2: 77.0000
 Latitude Of Origin: 49.0000
 Units: Meter

Mapping Draft Site-specific map data sources
 For Land Use Designation and Recommendations sources see draft Nunavut Land Use Designation and Recommendations map data sources
 material data sources documents
 Aliphilade created by utilizing Suits method in Hillsdale Institute country
 created by merging all 1,250,000 MTD (shapfiles in Nunavut, version 2.0, and selecting all waterbodies over
 50 hectares in size. Land outside of Nunavut, courtesy of Geospatial Administrative boundaries context of NPD
 and Nunavut, courtesy of Nunavut Government. Land use designations, courtesy of Nunavut Government
 boundaries, provided by Natural Resources Canada (cadastre data, inset) owned Lands (courtesy of Nunavut
 Tungmeik Incorporated. Territorial parks from the Government of Nunavut, Parks from Parks Canada
 data for areas within municipal boundaries obtained from Nunavut Resources Canada (cadastre data)

This map is to be used for reference purposes only by the NPD.
 Any further use of this map or data obtained is by contacting the Nunavut Planning
 Commission at: (867)793-4625 or email: nupc@nunavut.ca
 Wednesday, October 10, 2012

ARCTIC BAY WORKSHOP
NOVEMBER 1, 2012

[illegible]

**Revised Planning Commission
Community Consultation Year
and Use Mapping Survey**

Community: _____
Location: _____
Region: _____
Date: _____
Community MHA: _____
Map # _____

Signatures of the Community signify a permission form to conduct mapping session as follows:

1. _____	16
2. _____	17
3. _____	18
4. _____	19
5. _____	20
6. _____	21
7. _____	22
8. _____	23
9. _____	24
10. _____	25
11. _____	26
12. _____	27
13. _____	28
14. _____	29
15. _____	30

Signature of Mapper: Mullie

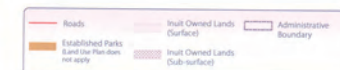
CONFIDENTIAL
Cody D. L. 486-7736
Nunavut Planning Commission
JAN 21 1998

CONFIDENTIALITY STAMP



Coordinate System: EPSG 42304 LCC
Projection: Lambert Conformal Conic
Datum: North American 1983
False Easting: 0.0000
False Northing: 0.0000
Central Meridian: -95.0000
Standard Parallel 1: 49.0000
Standard Parallel 2: 77.0000
Latitude Of Origin: 49.0000
Units: Meter

[illegible]



Designations	Permitted Uses	Prohibited Uses
MLJ	All Uses	

Comments Welcome

Joseph J. J. J.

R#0DA ToohooGak
Aidy Alcool
Sarah Alcool
Nasuk Alcool
Zipporah OYUKULUK

CONFIDENTIAL
C# 9405-55-490
Do Not Release Without Consent

Code	Comments
MU31	Important community use area. More restrictions.
MU32	We used to use this land with our forefathers. Include the waters around it.
MU33	We used to use all of the land now used by the mine, including Steensby Inlet where the wharf is going to be now.
MU34	All of this is the traditional land used by our fathers. It should not be used to drill.
MU35	Lancaster area included in NMCA study area
MU36	Admiralty Inlet should be added to NMCA study area
MU37	Area included in NMCA study area

**Newark Planning Commission
Community Consultation Form
Land Use Mapping Section**

Community _____
Location _____
Ward(s) _____
Community ID# _____
Map # _____

**Signatures of the Community entity as permission
to participate mapping section are forwarded:**

1.	_____	16.	_____
2.	_____	17.	_____
3.	_____	18.	_____
4.	_____	19.	_____
5.	_____	20.	_____
6.	_____	21.	_____
7.	_____	22.	_____
8.	_____	23.	_____
9.	_____	24.	_____
10.	_____	25.	_____
11.	_____	26.	_____
12.	_____	27.	_____
13.	_____	28.	_____
14.	_____	29.	_____
15.	_____	30.	_____

Signed by Mr. _____



CONFIDENTIAL OF AARP



 Coordinate System: EPSG 42304 LD
Projection: Lambert Conformal Conic
Datum: North American 1983
False Easting: 0.0000
False Northing: 0.0000
Central Meridian: -95.0000
Standard Parallel 1: 49.0000
Standard Parallel 2: 77.0000
Latitude Of Origin: 49.0000
Units: Meter

Working Draft Sub-regional map data sources:
For Land Use Designations and Recommendations sources see draft Nunavut Land Use Plan and background
Hilkhate created by utilizing Vito's method in Hilkhate toolbar (source: country of origin and material data source documents,
created by merging at 1:250,000 WGS84 UTM shapefiles in Nunavut, version 2.0, and selecting all waterbodies over
50 hectares in size. Land outside of Nunavut, country of Canada, Administrative boundaries created as NRC
draft map (source: Nunavut Government, Nunavut Land Use Plan, Nunavut Land Use Designations and Recommendations
boundaries, provided by Natural Resources Canada (geographical data, input: Owned Land parcels of Nunavut
Incorporated Territorial parcels from the Government of Nunavut, National Parks from Parks Canada
Data for areas within municipal boundaries obtained from the respective sources (see map legend for details)
This map is to be used for reference purposes only by the NRC
Any further use of Electronic Data Access will be necessary by contacting the Nunavut Planning
Commission at: (867)783-4625 or info@nrc.ca
Friday, October 12, 2012

Appendix 5: Follow-up Meeting

The NPC returned to the community to review a draft version of this report with the Hamlet Council, Hunters and Trappers Organization, and Community Lands and Resource Committee. The meeting included:

- A presentation of a draft version of this report
- An overview of the mapped information that was recorded for each topic:
 - Protecting and Sustaining the Environment
 - Encouraging Conservation Planning
 - Building Healthier Communities
 - Encouraging Sustainable Economic Development
 - Mixed Use
- Potential changes to the classification of a few mapped areas were discussed and agreed to.
- General discussion and comments including:
 - Timelines for completion
 - Opportunities to provide additional comments