

Summary of Community Meetings on the  
Draft Nunavut Land Use Plan  
IGLOOLIK  
March 7-9, 2013



Revised - September 2013



# Contents

Introduction .....	3	Appendix 1: Open House .....	17
1.1 Context .....	3	Appendix 2: Elected Officials Meeting .....	18
1.2 Purpose .....	3	Appendix 3: Questions and Answers .....	19
1.3 Methodology .....	3	Appendix 4: Community Workshop Scanned Maps .....	20
1.4 Public Awareness .....	3	Appendix 5: Wrap Up Session .....	31
1.5 Community Population and Participation .....	3	Appendix 6: Follow-up Meeting .....	33
 Protecting and Sustaining the Environment .....	4		
2.1 Areas presented to participants .....	4		
2.2 Areas identified by participants .....	4		
2.3 Areas of importance to Protecting and Sustaining the Environment ..	4		
 Encouraging Conservation Planning .....	6		
3.1 Areas presented to participants .....	6		
3.2 Areas identified by participants .....	6		
3.3 Areas of importance to Encouraging Conservation Planning .....	6		
 Building Healthier Communities .....	8		
4.1 Areas presented to participants .....	8		
4.2 Areas identified by participants .....	8		
4.3 Areas of importance to Building Healthier Communities .....	8		
 Encouraging Sustainable Economic Development .....	10		
5.1 Areas presented to participants .....	10		
5.2 Areas identified by participants .....	10		
5.3 Areas of importance to Encouraging Sustainable Economic Development .....	10		
 Mixed Use .....	12		
6.1 Areas identified in the Draft Plan .....	12		
6.2 Areas identified by participants .....	12		
 Overlapping Goals .....	15		
7.1 Areas identified for multiple goals .....	15		

# Chapter 1: Introduction

## 1.1 Context

The Nunavut Planning Commission (NPC) is preparing a land use plan to guide and direct resource use and development in the Nunavut Settlement Area (NSA). As part of its efforts, the NPC is facilitating discussions in each Nunavut community on land use and resource management issues. Information that is obtained from these discussions will be used to inform decisions regarding the further development of the Nunavut Land Use Plan (NLUP).

## 1.2 Purpose

This report presents information obtained during the NPC's visit to the community of Igloolik. The purpose of the report is to inform decisions regarding the further development of the NLUP, ensuring that the plan reflects the priorities and values of residents.

It is important to note that the information contained in the Community Report will be considered in conjunction with all other feedback when revising the DNLUP.

## 1.3 Methodology

Information was presented to and received from participants in Igloolik in accordance with the Nunavut Planning Commission's Community Engagement Strategy (Engagement Strategy). The Engagement Strategy provides for the following methods for presenting and receiving information;

- **Open house;** information contained in the Draft Nunavut Land Use Plan (DNLUP) was presented on 7 multi lingual large format poster boards. Participants were encouraged to review the posters, ask questions and provide feedback. Comments and questions were recorded by NPC staff and are contained in Appendix 1.
- **Elected Officials Meeting;** The NPC Chairperson and NPC staff met with senior and elected officials in the community. The development process for the DNLUP, its content and next steps were presented.

Comments and questions were recorded during the session and are contained in Appendix 2.

- **Public Workshop;** A formal presentation of the Draft Plan content was provided to participants, including a slide overview of its content. Following the presentation, questions and comments were received from participants. The questions, comments and responses are contained in Appendix 3.

A mapping session followed the presentation of the Draft Plan. The mapping session involved discussions regarding the topics presented in the DNLUP and encouraged participants to identify additional areas and issues important for inclusion in a NLUP. Information received during this session was recorded by NPC staff and is included in Appendix 4.

- **Wrap Up Session;** Staff was available to discuss the areas identified during the mapping and identify any additional issues or areas of interest. Information received during this session was recorded by NPC staff and is included in Appendix 5.

Areas that participants identified during mapping sessions as important to a particular goal have, in the majority of cases, been included in this report as they were recorded. In instances where participants identified an area that was better suited to another goal, the area has been reclassified to the more suitable goal and has been verified as appropriate to do so by the Community.

A follow-up meeting was held on May 16, 2013 to review a draft version of this report with the Hamlet Council, Hunters and Trappers Organization, and Community Lands and Resource Committee. A summary of this meeting is included in Appendix 6.

## 1.4 Public Awareness

The NPC raised public awareness regarding its visit to Igloolik in accordance with the Engagement Strategy.

The DNLUP and supporting materials were mailed to the Mayor and Council of Igloolik, the Hunters and Trappers

Organizations (HTO) in September 2012. In addition, letters of invitation were sent to the Igloolik Mayor and Council and HTO in advance of the NPC's visit to advise of the meetings and to encourage participation. Follow up phone calls were also made.

Public notice of the various events was provided in the following ways:

- **Nunatsiaq News and Nunavut News/North;** notice of community meetings were posted in both newspapers a minimum of 45 days in advance.
- **Co-op cable TV;** notice of community meetings was run a minimum of 45 days in advance for one week and run again for no less than 14 days before the meetings.
- **Community radio;** notices were read by the hosts and a live interview with the Commission Chairperson was conducted.
- **Community bulletin boards;** notices were posted on bulletin boards around the community 45 days and again 14 days in advance of the meetings.
- **Community mail drop;** one page flyers that announced the meetings and their purpose were delivered to the post office in each community for all mail boxes that accept unaddressed ad-mail.
- **nunavut.ca;** the schedule of community visits, the Draft Plan, and all supporting information was available on the Commission's website.

## 1.5 Community Population and Participation

Igloolik is a community of approximately 1455 people (Statistics Canada. 2011 Census). It is located on an island in northern Foxe Basin (see Figure 1).

The Commission visited the community on March 7-9, 2012. Due to a storm on March 7, the Public Workshop and Wrap Up

Session were postponed by a day, which extended the visit. The sessions were attended as follows;

- **Elected Officials Meeting;** the Mayor and members of the Hamlet Council and HTO attended the elected officials meeting.
- **Open house;** approximately 10 people attended the open house to review the Draft Plan on March 7. An additional Open House on March 8 was attended by approximately 25 people.
- **Public Workshop;** approximately 15 people attended the presentation of the DNLUP and facilitated mapping sessions. Information was recorded in 2 separate mapping groups.
- **Wrap Up Session;** approximately 5 people attended the wrap up session.



Figure 1. Location of Igloolik

# Chapter 2: Protecting and Sustaining the Environment

Protecting and Sustaining the Environment was one of five topics presented to and discussed by participants during the Open House, Elected Officials Meeting, Public Workshop and Wrap up Session, collectively referred to in this document as information sharing and gathering sessions.

## 2.1 Areas presented to participants

During the information sharing and gathering sessions, participants were presented the following areas and issues as important to Protecting and Sustaining the Environment.

- Key bird habitat sites
- Caribou Habitat sites
- Atlantic Cod Lakes
- Cumulative Impacts
- Transboundary considerations
- Climate change

The importance of these issues and areas to Protecting and Sustaining the Environment was not disputed by participants during the information sharing and gathering sessions.

## 2.2 Areas identified by participants

Additional areas and issues were identified by participants as important to Protecting and Sustaining the Environment during the information sharing and gathering sessions. These additional areas are;

- Important bird areas
- Walrus habitat
- Caribou habitat
- Marine mammal habitat

## 2.3 Areas of importance to Protecting and Sustaining the Environment

Areas and issues discussed during the information sharing and gathering sessions as important to Protecting and Sustaining the Environment are illustrated on Map 1, including areas identified in the DNLUP and areas identified by the community. Scanned images of the maps on which community feedback was recorded can be found in Appendix 4 and Appendix 5.

Based on discussions with participants, the NPC understands that:

- The areas identified on Map 1 are considered by the Community to be important to Protecting and Sustaining the Environment.
- In these areas, the community would like the NLUP to encourage activities that support environmental protection and management needs, including wildlife conservation, protection and management.

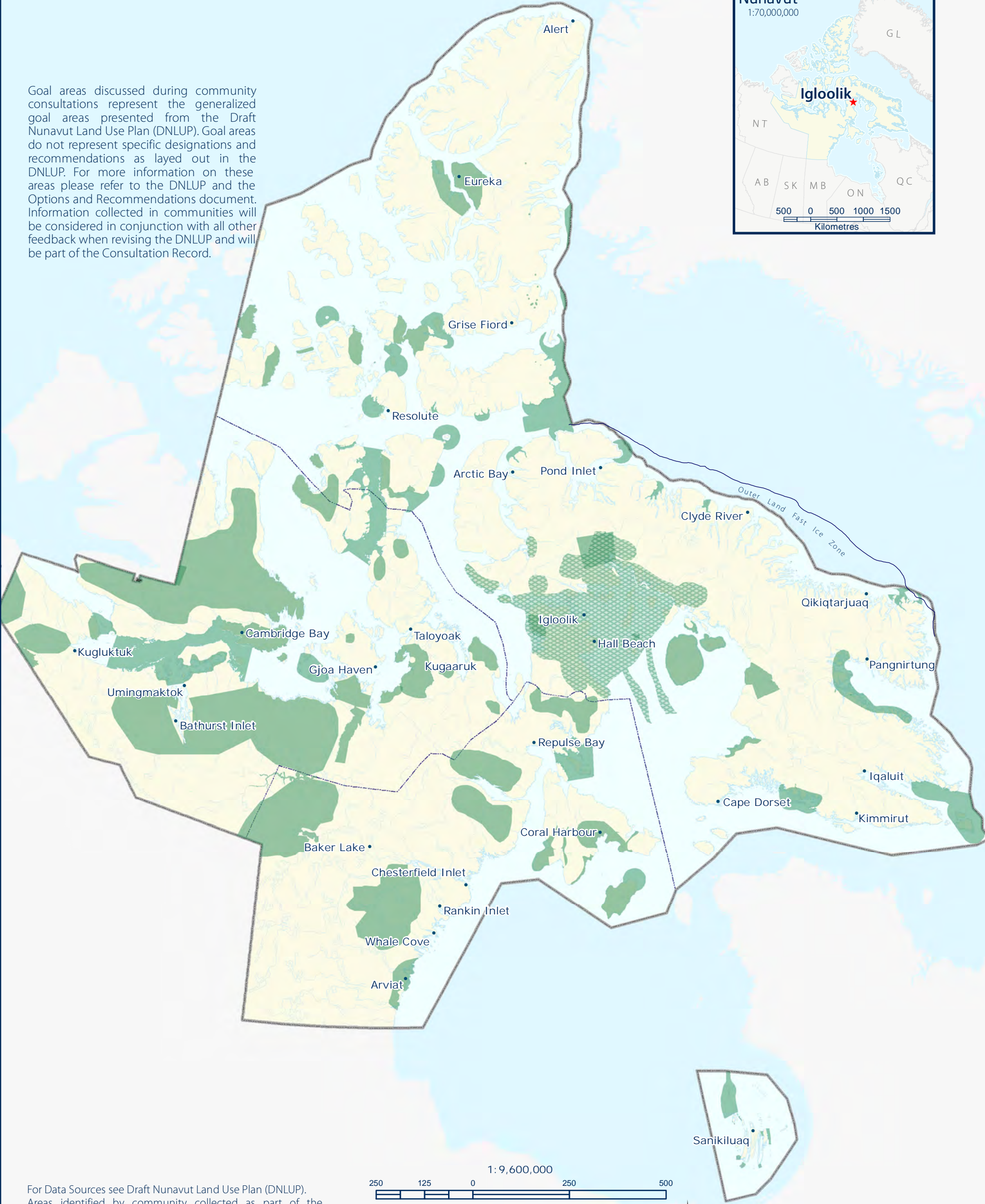
This feedback will be considered in conjunction with all other feedback when revising the DNLUP.





-  PSE Goal areas from the DNLUP discussed during community consultations
-  Additional PSE Goal areas identified during community consultations

Goal areas discussed during community consultations represent the generalized goal areas presented from the Draft Nunavut Land Use Plan (DNLUP). Goal areas do not represent specific designations and recommendations as layed out in the DNLUP. For more information on these areas please refer to the DNLUP and the Options and Recommendations document. Information collected in communities will be considered in conjunction with all other feedback when revising the DNLUP and will be part of the Consultation Record.



For Data Sources see Draft Nunavut Land Use Plan (DNLUP). Areas identified by community collected as part of the Nunavut Planning Commissions Community Engagement Strategy during the Mapping Sessions for the DNLUP on March 7 & 8, 2013. Maps were digitized at the Nunavut Planning Commission. To be used for illustration purposes only as part of the Draft Nunavut Land Use Plan Consultation Process.



ᓄᓇᓂᓄᓐ ᐸᓄᓐᓂᓐ  
Nunavunmi Parnaiyiit  
Nunavut Planning Commission  
Commission d'Aménagement du Nunavut



Projection: Canada Lambert Conformal  
Conic, NAD83  
Produced by the Nunavut Planning  
Commission: (867)983-4625,  
npc@nunavut.ca  
June-24-13



## Chapter 3: Encouraging Conservation Planning

Encouraging Conservation Planning was one of five topics presented to and discussed by the participants during the information sharing and gathering sessions.

### 3.1 Areas presented to participants

During the information sharing and gathering sessions, participants were presented the following areas and issues as important to Encouraging Conservation Planning;

- National Parks Awaiting Full Establishment
- Proposed National Parks
- National Marine Conservation Areas
- Thelon Wildlife Sanctuary
- Migratory Bird Sanctuaries
- National Wildlife Areas
- National Historic Sites
- Territorial Historic Sites
- Heritage Rivers

The importance of these issues and areas to Encouraging Conservation Planning was not disputed by participants during the information sharing and gathering sessions.

### 3.2 Areas identified by participants

Additional areas and issues were identified by participants as important to Encouraging Conservation Planning during the information sharing and gathering sessions. These additional areas are.

- Historic sites
- Fishing areas

### 3.3 Areas of importance to Encouraging Conservation Planning

Areas and issues discussed during the information sharing and gathering sessions as important to Encouraging Conservation Planning are illustrated on Map 2, including areas identified in the DNLUP and areas identified by the community. Scanned images of the maps on which community feedback was recorded can be found in Appendix 4 and Appendix 5.

Based on discussions with participants, the NPC understands that:

- The areas identified on Map 2 are considered by the Community to be important to Encouraging Conservation Planning.
- In these areas, the community would like the NLUP to encourage activities that support environmental protection and management needs, including wildlife conservation, protection and management.

This feedback will be considered in conjunction with all other feedback when revising the DNLUP.

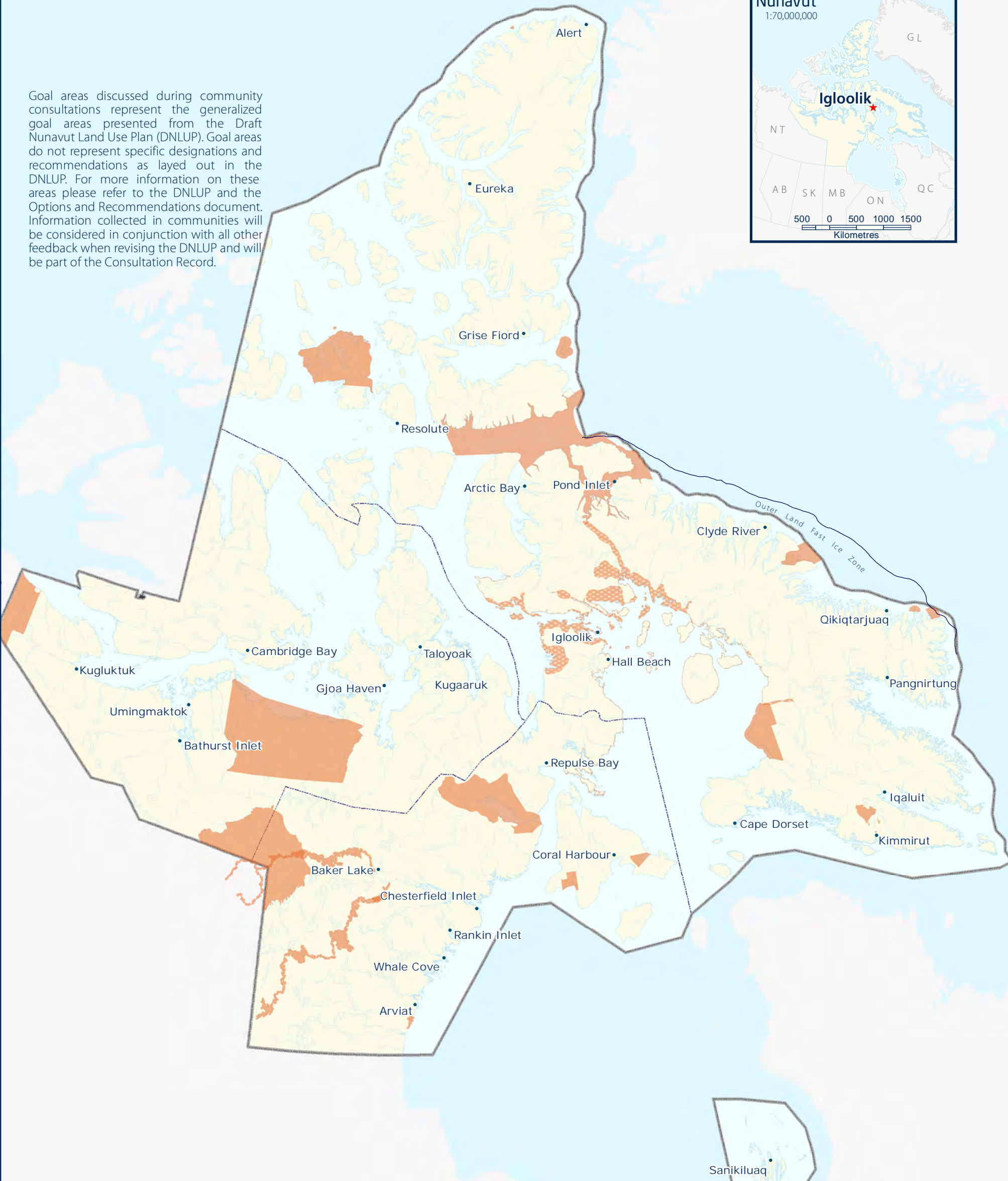




 ECP Goal areas from the DNLUP discussed during community consultations

 Additional ECP Goal areas identified during community consultations

Goal areas discussed during community consultations represent the generalized goal areas presented from the Draft Nunavut Land Use Plan (DNLUP). Goal areas do not represent specific designations and recommendations as layed out in the DNLUP. For more information on these areas please refer to the DNLUP and the Options and Recommendations document. Information collected in communities will be considered in conjunction with all other feedback when revising the DNLUP and will be part of the Consultation Record.



For Data Sources see Draft Nunavut Land Use Plan (DNLUP). Areas identified by community collected as part of the Nunavut Planning Commissions Community Engagement Strategy during the Mapping Sessions for the DNLUP on March 7 & 8, 2013. Maps were digitized at the Nunavut Planning Commission. To be used for illustration purposes only as part of the Draft Nunavut Land Use Plan Consultation Process.



ᓄᓇᓂᓄᓐ ᐸᓐᓇᓂᓄᓐ  
Nunavunmi Parnaiyiit  
Nunavut Planning Commission  
Commission d'Aménagement du Nunavut



Projection: Canada Lambert Conformal  
Conic, NAD83  
Produced by the Nunavut Planning  
Commission: (867)983-4625,  
npc@nunavut.ca  
June-24-13



Building Healthier Communities was one of five topics presented to and discussed by the participants during the information sharing and gathering sessions.

### 4.1 Areas presented to participants

During the information sharing and gathering sessions, participants were presented the following areas and issues as important to Building Healthier Communities;

- Areas of Community Interest
- Community Land Use
- Transportation Infrastructure
- Unincorporated Communities
- Alternative Energy Sources
- Community drinking water supplies
- Land remediation
- Northern Contaminated Sites Program
- Aerodromes
- Canadian Forces Station
- Northern Warning System sites

The importance of these issues and areas to Building Healthier Communities was not disputed by participants.

### 4.2 Areas identified by participants

Additional areas and issues were identified by participants as important to contributing to the goal of Building Healthier Communities during the information sharing and gathering sessions. These additional areas are;

- Drinking water

- Historic sites

### 4.3 Areas of importance to Building Healthier Communities

Areas and issues discussed during the information sharing and gathering sessions as important to Building Healthier Communities are illustrated on Map 3, including areas identified in the DNLUP and areas identified by the community. Scanned images of the maps on which community feedback was recorded can be found in Appendix 4 and Appendix 5.



Based on discussions with participants, the NPC understands that:

- The areas identified on Map 3 are considered by the Community to be important to Building Healthier Communities.
- In these areas, the community would like the NLUP to encourage activities that support community needs and cultural priorities.

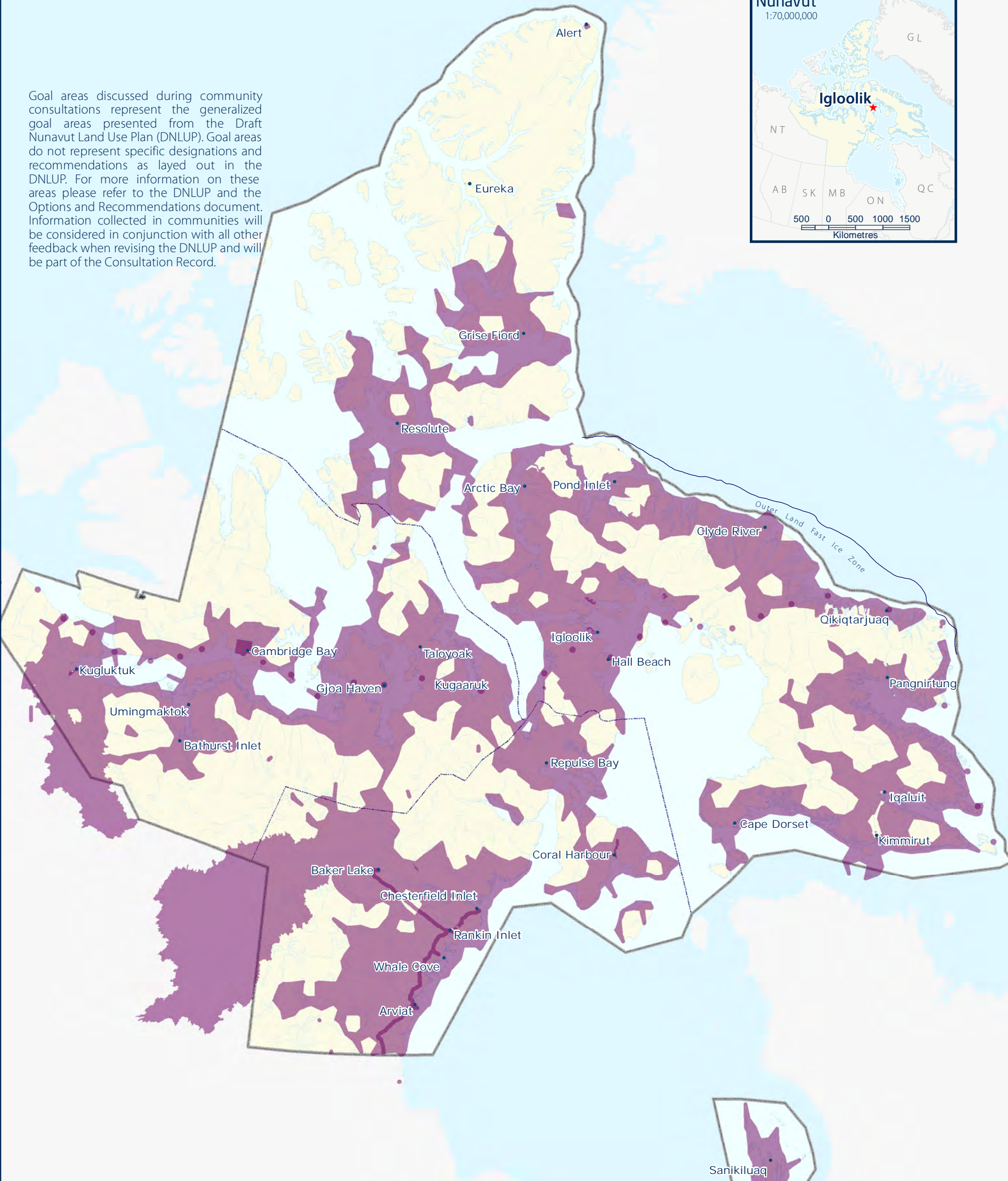
This feedback will be considered in conjunction with all other feedback when revising the DNLUP.





-  BHC Goal areas from the DNLUP discussed during community consultations
-  Additional BHC Goal areas identified during community consultations

Goal areas discussed during community consultations represent the generalized goal areas presented from the Draft Nunavut Land Use Plan (DNLUP). Goal areas do not represent specific designations and recommendations as layed out in the DNLUP. For more information on these areas please refer to the DNLUP and the Options and Recommendations document. Information collected in communities will be considered in conjunction with all other feedback when revising the DNLUP and will be part of the Consultation Record.



For Data Sources see Draft Nunavut Land Use Plan (DNLUP). Areas identified by community collected as part of the Nunavut Planning Commissions Community Engagement Strategy during the Mapping Sessions for the DNLUP on March 7 & 8, 2013. Maps were digitized at the Nunavut Planning Commission. To be used for illustration purposes only as part of the Draft Nunavut Land Use Plan Consultation Process.



Projection: Canada Lambert Conformal Conic, NAD83  
Produced by the Nunavut Planning Commission: (867)983-4625, npc@nunavut.ca  
June-24-13



# Chapter 5: Encouraging Sustainable Economic Development

Encouraging Sustainable Economic Development was one of five topics presented to and discussed by the participants during the information sharing and gathering sessions.

## 5.1 Areas presented to participants

During the information sharing and gathering sessions, participants were presented with the following areas important to Encouraging Sustainable Economic Development;

- Mineral Exploration and Production
- Oil and Gas Exploration
- Commercial Fisheries

The importance of these issues and areas to Encouraging Sustainable Economic Development was not disputed by participants during the information sharing and gathering sessions.

## 5.2 Areas identified by participants

Additional areas and issues were identified by participants as important to Encouraging Sustainable Economic Development during the information sharing and gathering sessions. The additional areas identified are;

- Commercial fisheries
- Soapstone

## 5.3 Areas of importance to Encouraging Sustainable Economic Development

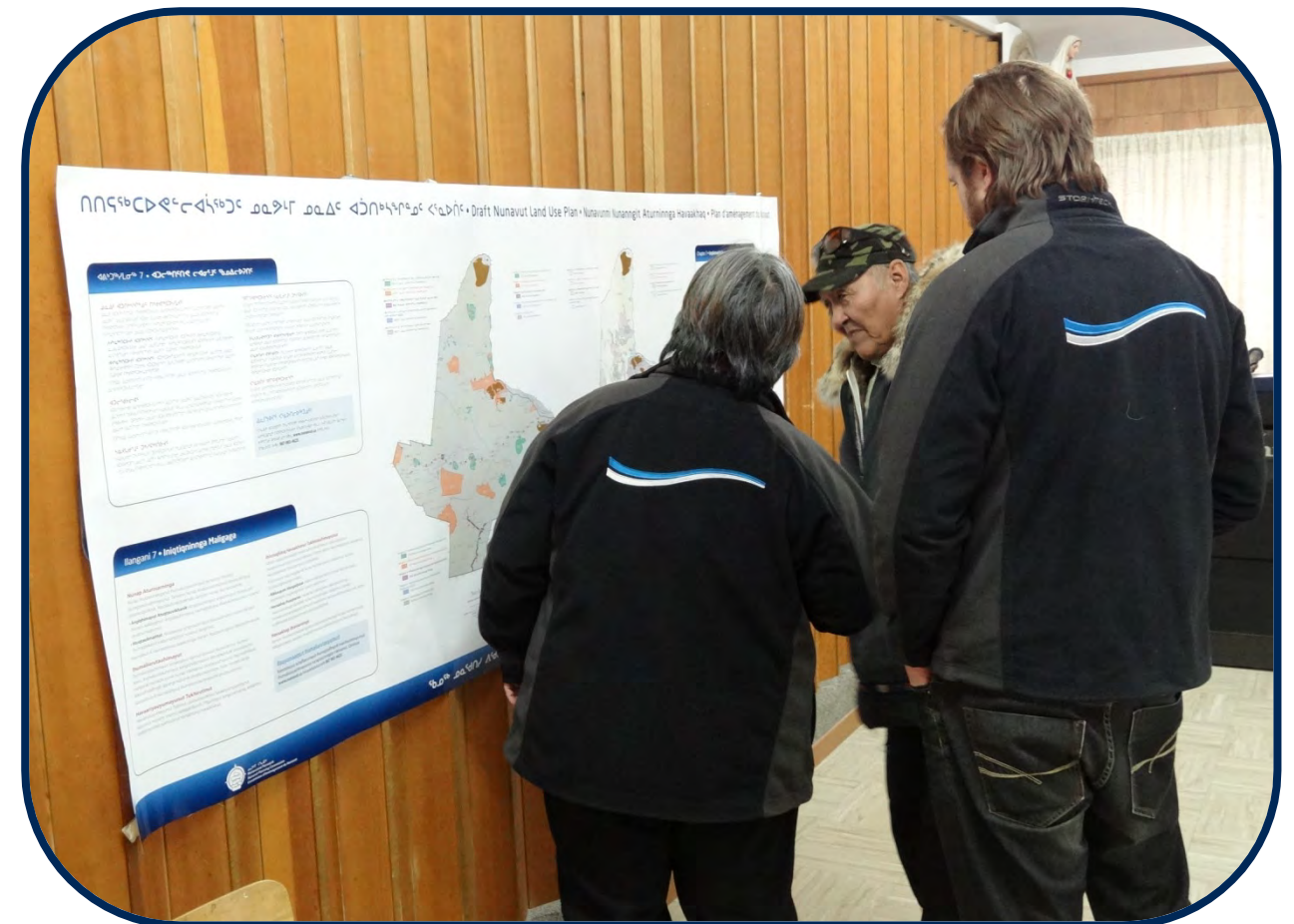
Areas and issues discussed during the information sharing and gathering sessions as important to Encouraging Sustainable Economic Development are illustrated on Map 4, including areas identified in the DNLUP and areas identified by the community. Scanned images of the maps on which

community feedback was recorded can be found in Appendix 4 and Appendix 5.

Based on discussions with participants, the NPC understands that:

- The areas identified on Map 4 are considered by the Community to be important to Encouraging Sustainable Economic Development.
- In these areas, the community would like the NLUP to encourage activities that support economic opportunities and needs.

This feedback will be considered in conjunction with all other feedback when revising the DNLUP.

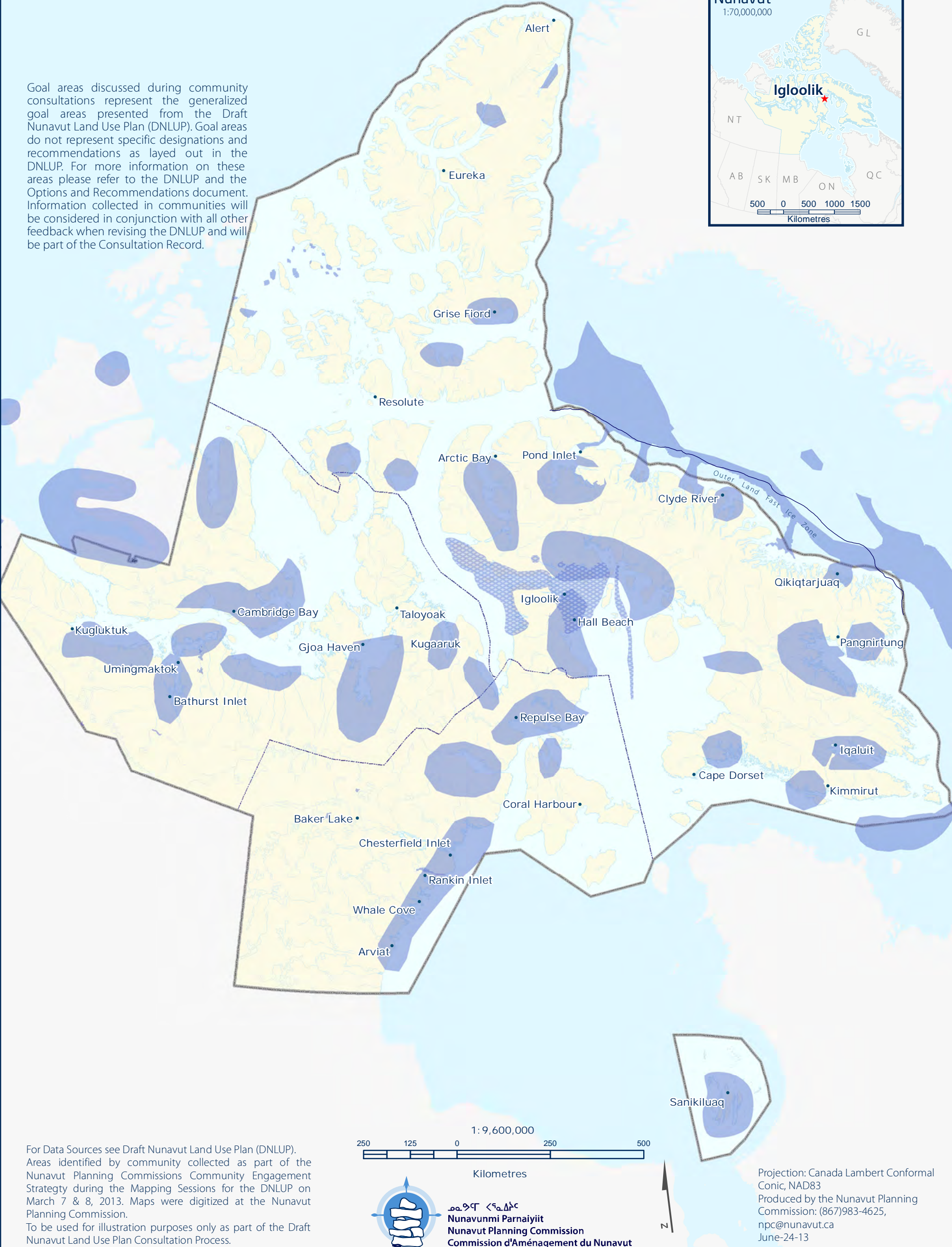




**ESED Goal areas from the DNLUP discussed during community consultations**

**Additional ESED Goal areas identified during community consultations**

Goal areas discussed during community consultations represent the generalized goal areas presented from the Draft Nunavut Land Use Plan (DNLUP). Goal areas do not represent specific designations and recommendations as layed out in the DNLUP. For more information on these areas please refer to the DNLUP and the Options and Recommendations document. Information collected in communities will be considered in conjunction with all other feedback when revising the DNLUP and will be part of the Consultation Record.



For Data Source see Draft Nunavut Land Use Plan (DNLUP). Areas identified by community collected as part of the Nunavut Planning Commissions Community Engagement Strategy during the Mapping Sessions for the DNLUP on March 7 & 8, 2013. Maps were digitized at the Nunavut Planning Commission.

To be used for illustration purposes only as part of the Draft Nunavut Land Use Plan Consultation Process.

**Nunavunmi Parnaiyiit**  
**Nunavut Planning Commission**  
**Commission d'Aménagement du Nunavut**

Projection: Canada Lambert Conformal  
Conic, NAD83  
Produced by the Nunavut Planning  
Commission: (867)983-4625,  
npc@nunavut.ca  
June-24-13



### 6.1 Areas identified in the Draft Plan

The DNLUP identifies areas important for a variety of uses. These areas were presented to participants during the workshop as Mixed Use Areas. These areas, as they occur around the community, are illustrated on Map 5.

### 6.2 Areas identified by participants

No additional areas were identified as Mixed Use by participants. However, some areas identified as Mixed Use in the DNLUP were considered by participants to require additional protection because of their particular qualities. These areas and the goals they are important for are identified on Map 6.

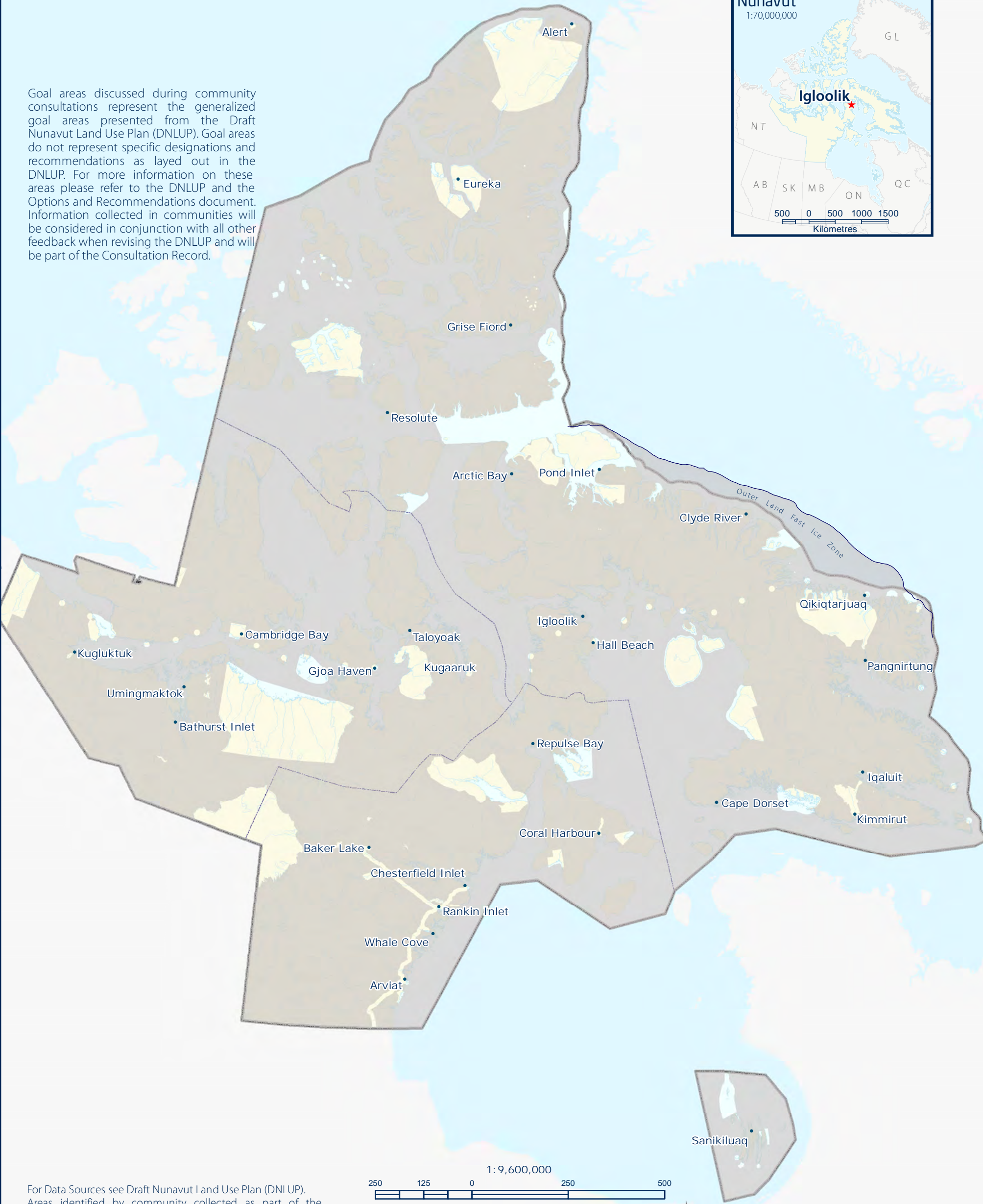






MU Goal areas from DNLUP discussed during community consultations

Goal areas discussed during community consultations represent the generalized goal areas presented from the Draft Nunavut Land Use Plan (DNLUP). Goal areas do not represent specific designations and recommendations as layed out in the DNLUP. For more information on these areas please refer to the DNLUP and the Options and Recommendations document. Information collected in communities will be considered in conjunction with all other feedback when revising the DNLUP and will be part of the Consultation Record.



For Data Sources see Draft Nunavut Land Use Plan (DNLUP). Areas identified by community collected as part of the Nunavut Planning Commissions Community Engagement Strategy during the Mapping Sessions for the DNLUP on March 7 & 8, 2013. Maps were digitized at the Nunavut Planning Commission. To be used for illustration purposes only as part of the Draft Nunavut Land Use Plan Consultation Process.



ᑎᓄᓐᓂᓐ ᐃᓕᓐᓂᓐ  
Nunavunmi Parnaiyiit  
Nunavut Planning Commission  
Commission d'Aménagement du Nunavut



Projection: Canada Lambert Conformal Conic, NAD83  
Produced by the Nunavut Planning Commission: (867)983-4625, npc@nunavut.ca  
June-24-13



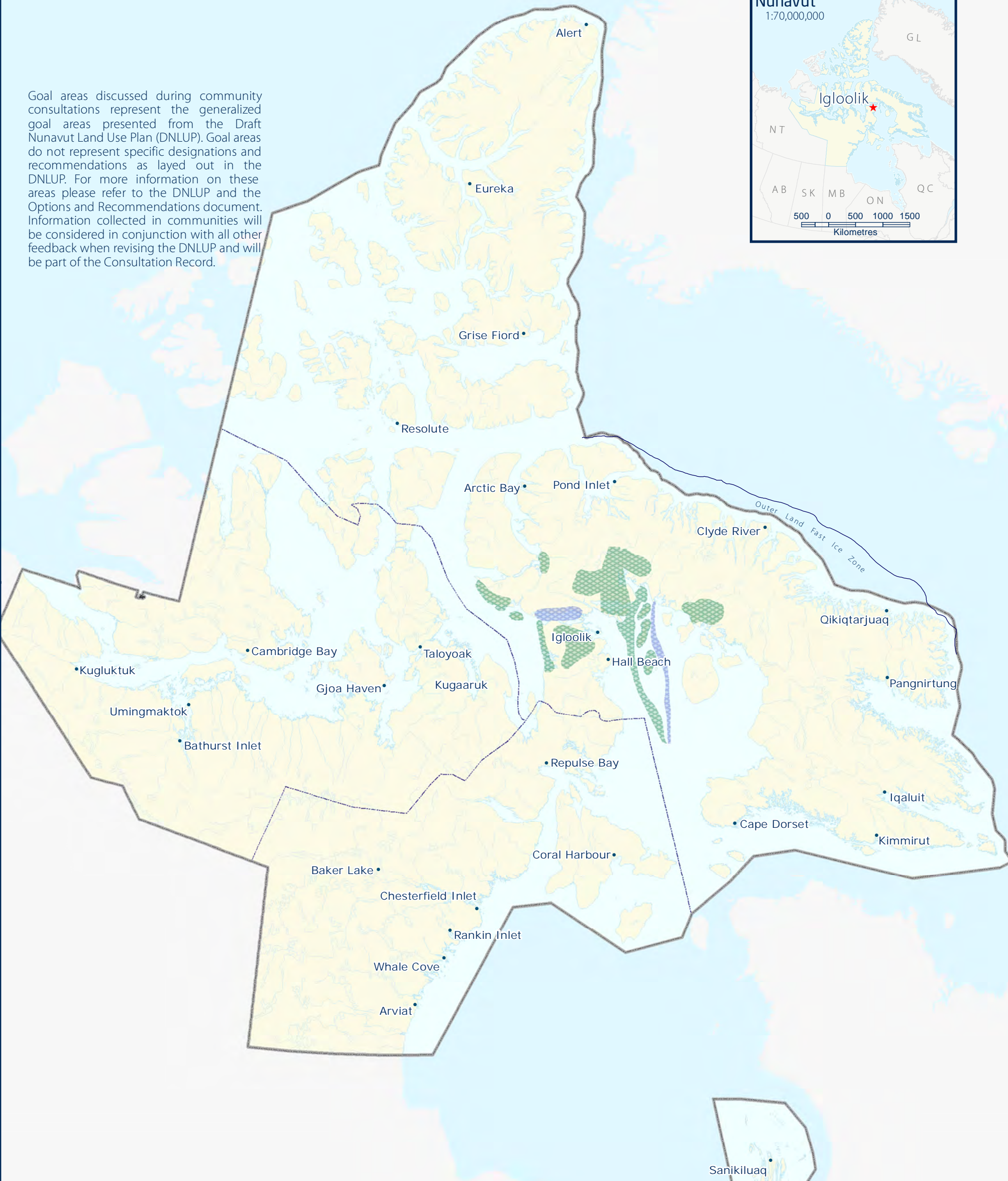


Additional PSE Goal areas identified during community consultations



Additional ESED Goal areas identified during community consultations

Goal areas discussed during community consultations represent the generalized goal areas presented from the Draft Nunavut Land Use Plan (DNLUP). Goal areas do not represent specific designations and recommendations as layed out in the DNLUP. For more information on these areas please refer to the DNLUP and the Options and Recommendations document. Information collected in communities will be considered in conjunction with all other feedback when revising the DNLUP and will be part of the Consultation Record.



For Data Sources see Draft Nunavut Land Use Plan (DNLUP). Areas identified by community collected as part of the Nunavut Planning Commissions Community Engagement Strategy during the Mapping Sessions for the DNLUP on March 7 & 8, 2013. Maps were digitized at the Nunavut Planning Commission. To be used for illustration purposes only as part of the Draft Nunavut Land Use Plan Consultation Process.



**Nunavunmi Parnaiyit**  
**Nunavut Planning Commission**  
**Commission d'Aménagement du Nunavut**



Projection: Canada Lambert Conformal  
Conic, NAD83  
Produced by the Nunavut Planning  
Commission: (867)983-4625,  
npc@nunavut.ca  
April-25-13



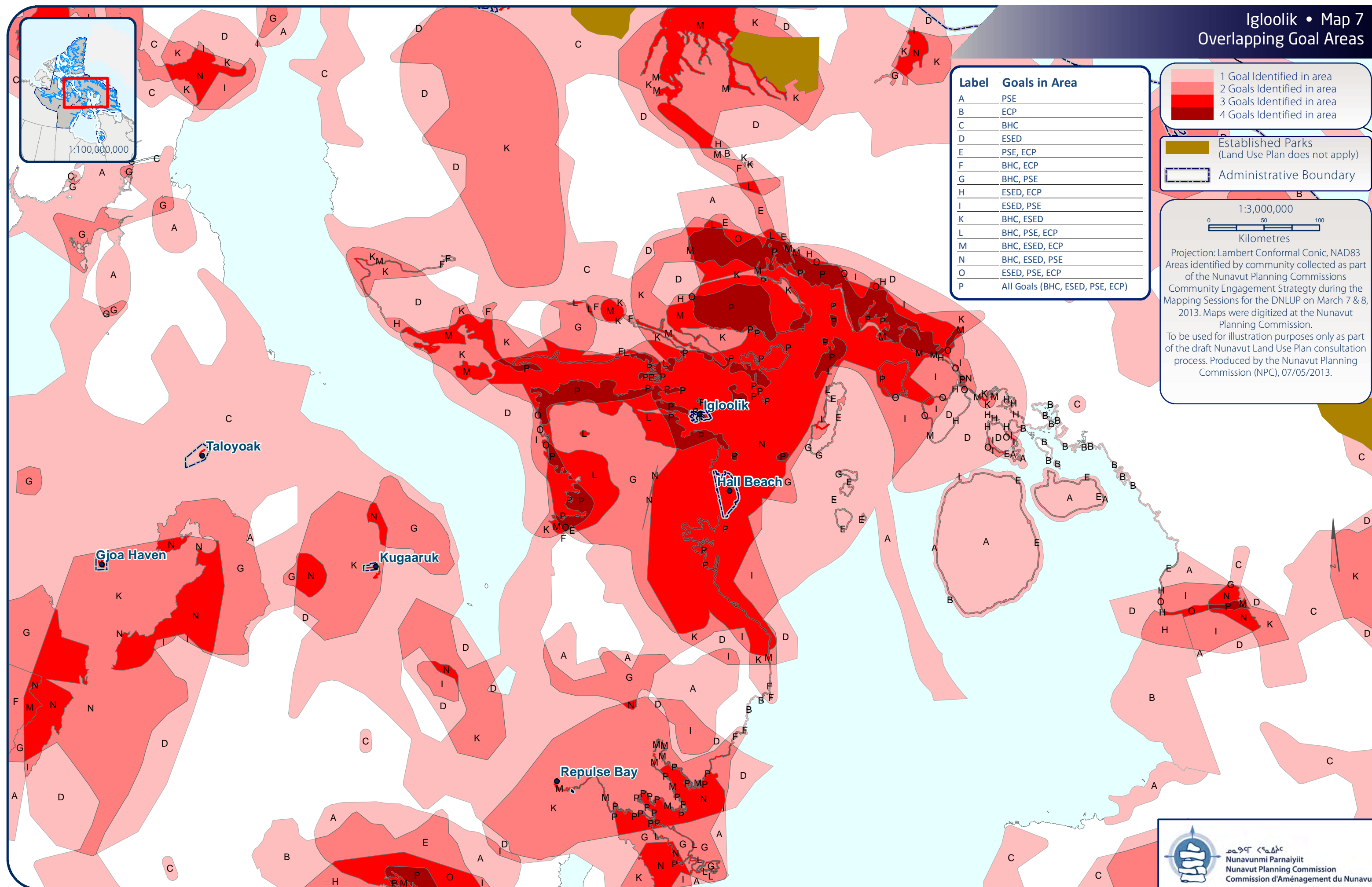
### 7.1 Areas identified for multiple goals

All areas discussed with the community as important for a particular goal are shown on Map 7. In some instances, areas have been identified as important for multiple goals. These areas, and the specific goals they are important to, are also shown on Map 7. In these areas, the NPC will take all of the identified goals and all other feedback into consideration when revising the DNLUP.





## Igloolik • Map 7 Overlapping Goal Areas





## Appendix 1: Open House

During the open house, participants raised the following issues:

- Worried about marine mammals being impacted by shipping, including bearded seal pupping and walrus areas in Foxe Basin.
- All of Nunavut is 'our land'. We're not just concerned about our housing lot or personal property, like in the south. People in the south don't understand that we think about the land differently here.





## Appendix 2: Elected Officials Meeting

The elected officials meeting was attended by the Mayor and members of the Hamlet Council and HTO. During the meeting, participants raised the following issues:

- Concerned with the management of cultural/historic sites.
- The Coast Guard in the north should utilize northern people.
- Questions regarding changes to Inuit Owned Lands.
  - The Commission answered that the plan will apply to IOL, but will not change the areas. Changes to IOL would be the responsibility of NTI and government.
- Concerned about enforcement.



## Appendix 3: Questions and Answers

During the community workshop, there was a question and answer period, which included a discussion of the following topics:

- [Participant missed the beginning of the meeting] Who are you? Who sent you? Who do you represent?
  - The Commission answered that the Nunavut Planning Commission was established under the Nunavut Land Claims Agreement to plan for how land is used in Nunavut.
- We need to have our environment well protected. Many only care for their immediate well-being, not the future. Wildlife is important for survival. Disturbance from exploration is terrible. Wildlife is my food, my existence. This appears to be the start of something.
  - The Commission answered that the NPC has been in existence since 1993, and works according to the Nunavut Land Claims Agreement. The Commission has developed and currently implements the North Baffin Regional Land Use Plan and the Keewatin Regional Land Use Plan. Those plans will be replaced by the Nunavut Land Use Plan, once it is approved.
- The land you've mentioned. What about the air? Are you looking at that? Noise pollution disturbs wildlife. Jets flying over? Are they in your mandate? Pollution from planes too. Are you concerned about this?
  - The Commission answered that issues such as low level flights can be looked at, but they are difficult to police. Areas that should be avoided can be identified, though.
- Airborne pollution is a problem we try to convey to government but to no avail. Are these pollutions causing cancer? Are DEW line sites burying vehicles? This is unhealthy. Also, conservation areas, are you looking into them? Fox basin has a lot of food for us. Can you slow down the damage to the environment and animals?
  - The Commission answered that the Draft Plan identifies contaminated sites, including some of the North Warning System sites. In the mapping session you will be asked if there are any other contaminated sites that should be included. Conservation areas will also be discussed in the mapping session.





## Appendix 4: Community Workshop Scanned Maps

Two groups completed the mapping session to identify important areas. This Appendix contains the maps that were used by participants to identify areas that are important to the following land use planning goals:

- Protecting and Sustaining the Environment
- Encouraging Conservation Planning
- Building Healthier Communities
- Encouraging Sustainable Economic Development
- Mixed Use

Also included on each map is a reference table that includes the specific values that were identified for the area.

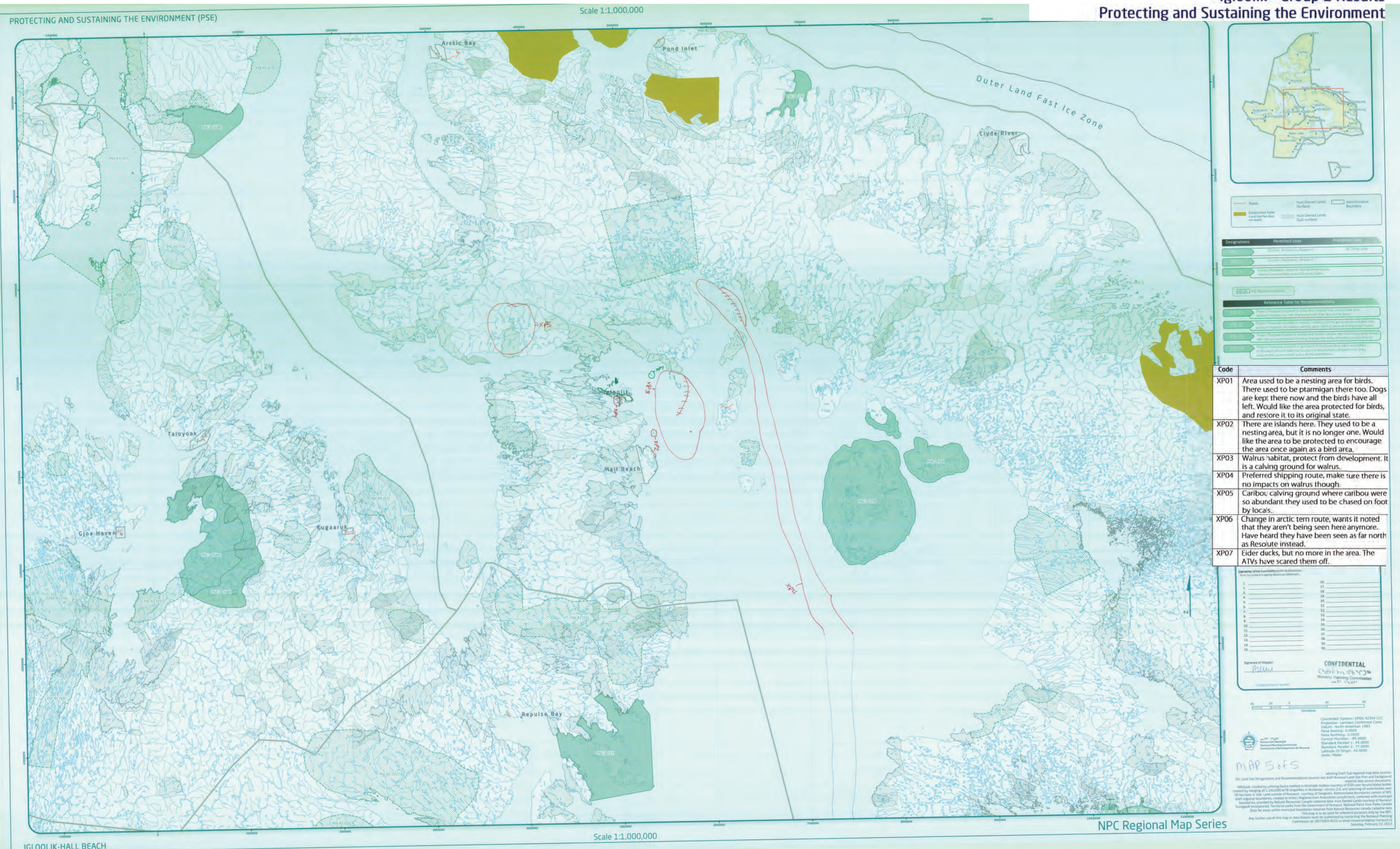
During the mapping portion of the community workshop, the following concerns were raised that did not apply to a specific area that was identified on the maps:

- We do not agree with the scientific research on walrus. It scared the walrus off.
- Walrus can be harvested for tusks.
- DEW line sites are mostly cleaned up.
- It's hard to pinpoint where animals and birds are. It's hard to know exact locations.
- Caribou are usually around between summer and November.
- Doesn't want any historic or archeological site disturbed.
- BHC areas are important to Igloodikmiut.
- Agree with areas shown on ESED map
- Shipping routes that need protection. Land fees should be imposed because there are no benefits to cruise ships coming in to Igloodik; they just disturb wildlife and take pictures.

- We need to mark areas of Polar Bear and Walrus areas, caribou areas. These can be used for sports/commercial uses.



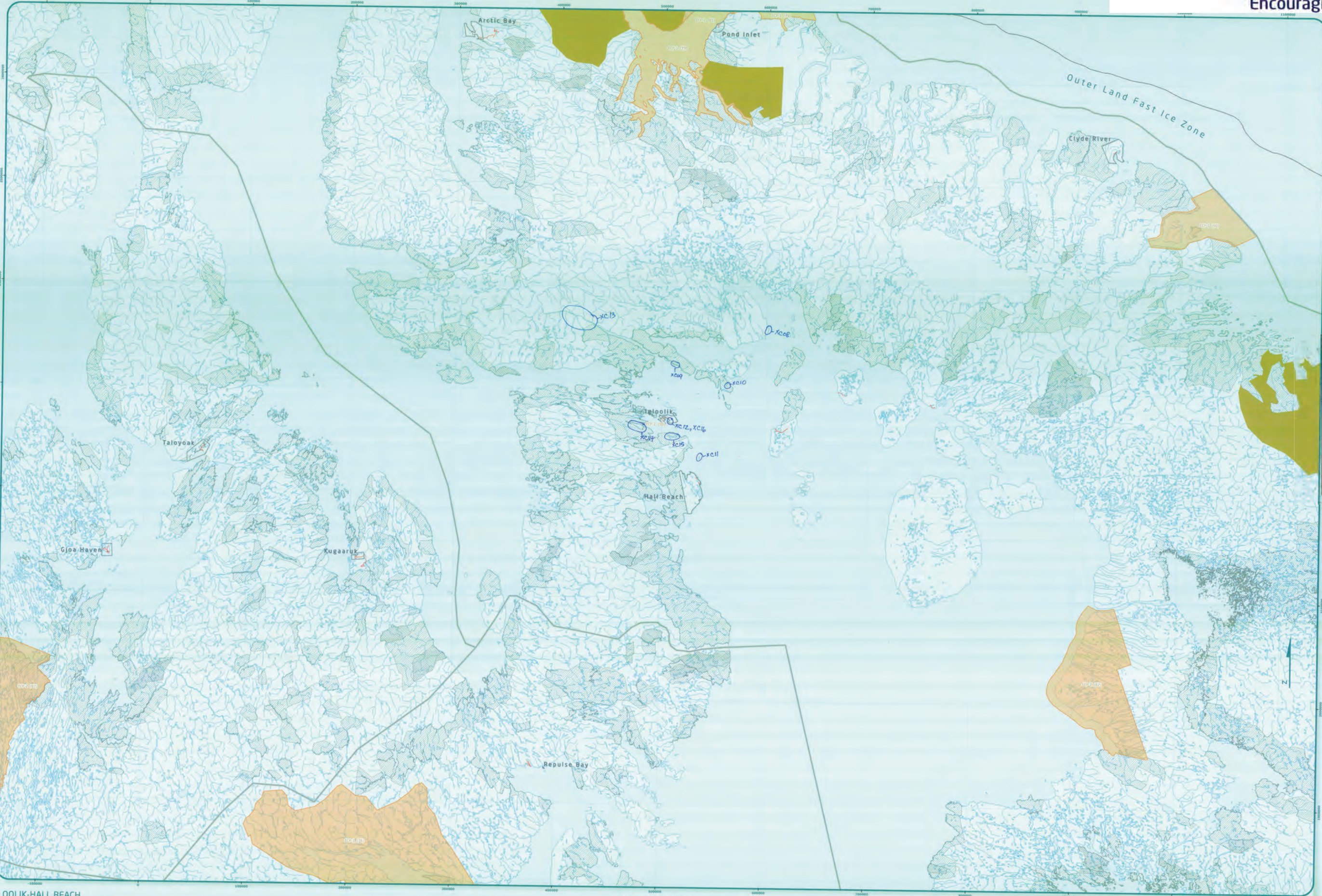
## Igloolik - Group 1 Results











Designations	Permitted Uses	Prohibited Uses
Established Parks (Land Use Plan does not apply)	Traditional Resource Harvesting	Industrial Use
Inuit Owned Lands (Surface)	Traditional Resource Harvesting	Industrial Use
Inuit Owned Lands (Sub-surface)	Traditional Resource Harvesting	Industrial Use

Reference Table for Recommendations

For the purpose of this map, the following designations are used:

- XC08 - Sod houses in the area, important for protection.
- XC09 - Sod houses in the area, important for protection.
- XC10 - Sod houses in the area, important for protection.
- XC11 - Sod houses in the area, important for protection. There is a legend that the Thule crushed all the rocks when Inuit took over the site.
- XC12 - Iglood Point - 5 or 6 sod houses and 3 burial sites.
- XC13 - Lake is very valuable for high quality char.
- XC14 - Community fishing site.
- XC15 - Fishing ground.
- XC16 - Fishing ground.

Code	Comments
XC08	Sod houses in the area, important for protection.
XC09	Sod houses in the area, important for protection.
XC10	Sod houses in the area, important for protection.
XC11	Sod houses in the area, important for protection. There is a legend that the Thule crushed all the rocks when Inuit took over the site.
XC12	Iglood Point - 5 or 6 sod houses and 3 burial sites.
XC13	Lake is very valuable for high quality char.
XC14	Community fishing site.
XC15	Fishing ground.
XC16	Fishing ground.

Signature of the Community Representative: *[Signature]*

Signature of the Mapper: *[Signature]*

CONFIDENTIAL

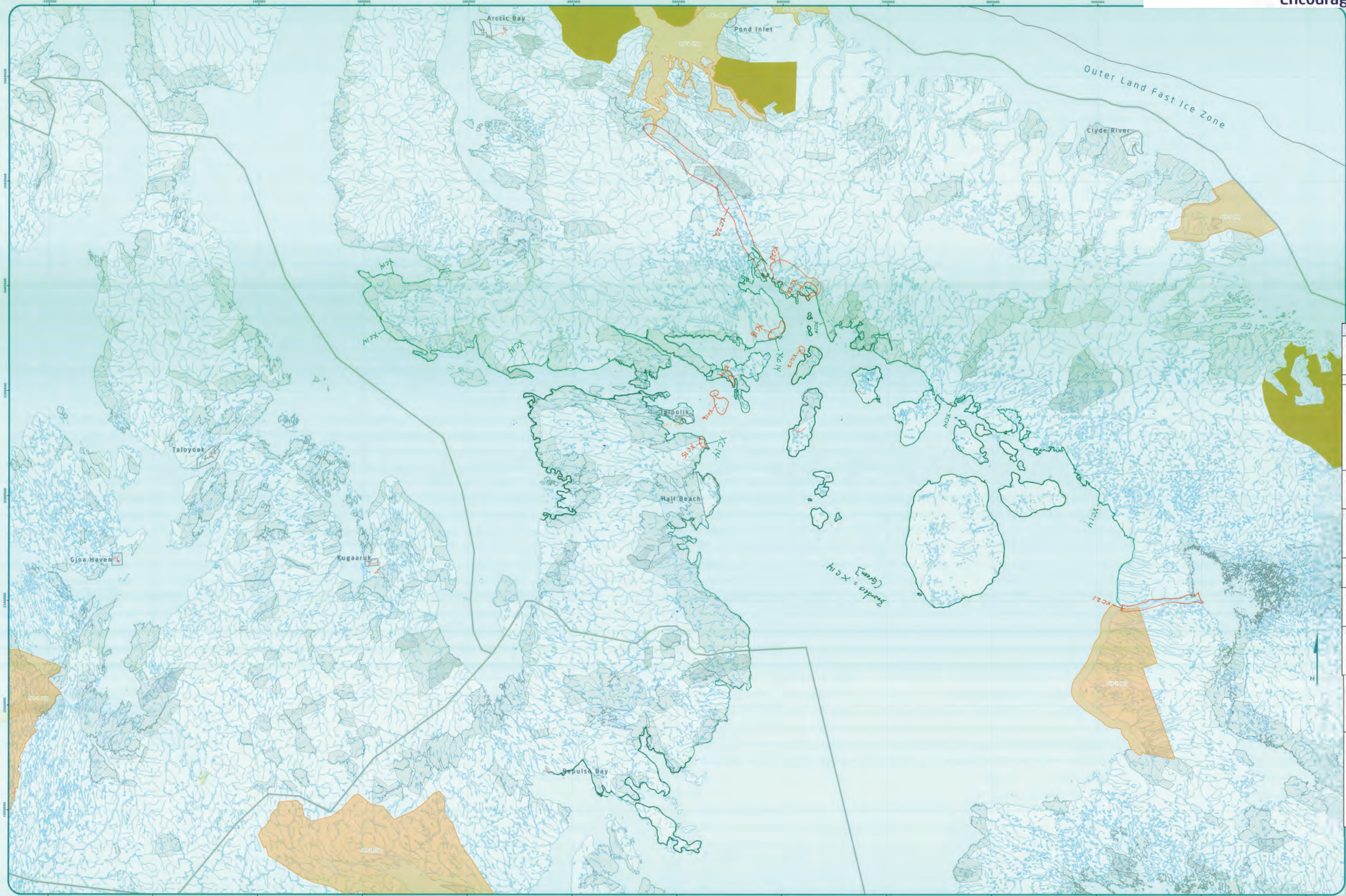
Municipal Planning Commission

Map 4045

Coordinate System: EPSG:42304 LCC  
Projection: Lambert Conformal Conic  
Datum: North American 1983  
False Easting: 0.0000  
False Northing: 0.0000  
Central Meridian: -95.0000  
Standard Parallel 1: 49.0000  
Standard Parallel 2: 77.0000  
Latitude Of Origin: 49.0000  
Units: Meter

For Land Use Designations and Recommendations sources see draft Nunavut Land Use Plan and Background Information created by utilizing data sources mentioned in the background information documents. Material data source documents created by merging all 1:250,000 NTS shapefiles in Nunavut, version 2.0, and selecting all waterbodies over 50 hectares in size. Land inside of Nunavut, courtesy of Geomatics Canada. Administrative boundaries consist of NWT draft regional boundaries, created to reflect Regional Inuit Association jurisdictions, combined with municipal boundaries provided by Natural Resources Canada. Land Use data, Inuit Owned Lands, courtesy of NWT. Nunavut Incorporated. Territorial parks from the Government of Nunavut, National Parks from Parks Canada. Data for areas within municipal boundaries obtained from Natural Resources Canada cadastral data. This map is to be used for reference purposes only by the NPC. Any further use of this map or data therein must be authorized by contacting the Nunavut Planning Commission at: (867) 983-4625 or email: [enr@nplanning.ca](mailto:enr@nplanning.ca)



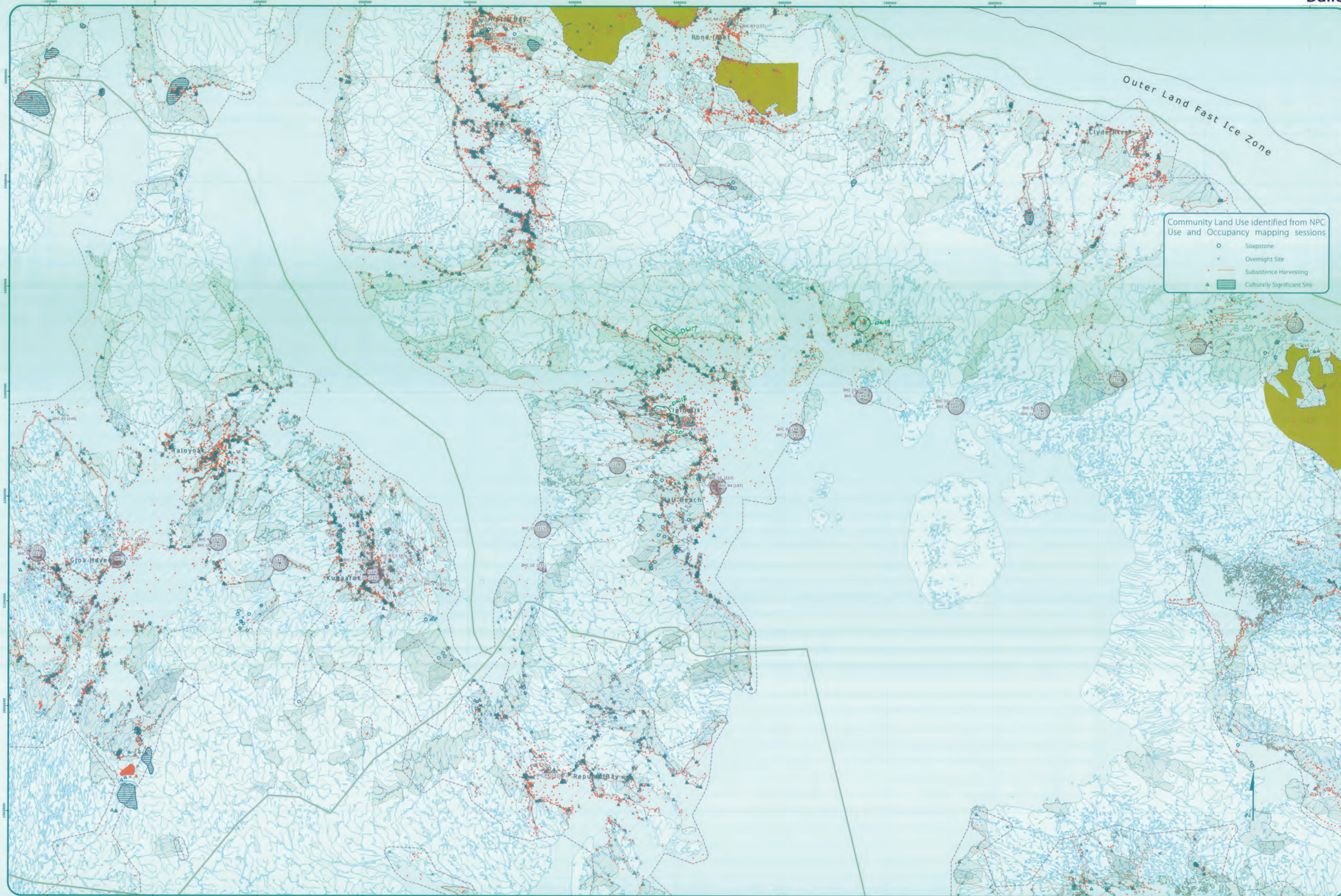


Designations	Permitted Uses	Prohibited Uses
ECP 14	Traditional Resource Harvesting	Highly Sensitive
ECP 15	Traditional Resource Harvesting	Highly Sensitive
ECP 16	Traditional Resource Harvesting	Highly Sensitive
ECP 17	Traditional Resource Harvesting	Highly Sensitive
ECP 18	Traditional Resource Harvesting	Highly Sensitive
ECP 19	Traditional Resource Harvesting	Highly Sensitive
ECP 20	Traditional Resource Harvesting	Highly Sensitive
ECP 21	Traditional Resource Harvesting	Highly Sensitive
ECP 22	Traditional Resource Harvesting	Highly Sensitive
ECP 23	Traditional Resource Harvesting	Highly Sensitive

Code	Comments
XC14	Most sensitive area. Has been inhabited by Inuk for centuries. To be protected for historic reasons. All of the Shore line with a 1 km distance inland from the shoreline.
XC15	Historic site to be protected.
XC16	Island to be protected for historic reasons. I would mark the areas I know where the animals are; where we used to hunt in and around Igloolik for walrus and other sea mammals. Many of the islands were important to live in during freeze up, we should concentrate on areas that we use to live in and survive from during hunting season cycles.
XC17	These are the islands where traditional lands are from long ago. Most of them would be historic sites, many make shed homes, and gamuq.
XC18	These are the areas we lived in as young people with our parents; many of them now can be considered as historic sites. Also to consider is an area where people from Maniuaq area people used to live.
XC19	Historic sites; this is an area which is traditional home of Louis Uttak. My parents' traditional home land.
XC20	Many of the coves and inlets were important sites, we used to live in these areas and I consider them traditional lands, lot of sea mammals.
XC21	This area is historical land of my family, there is a traditional Inuit song depicting in folklore by song identifying the sounding area which I still understand and could recognized.
XC22	I would like to see this area protected and no development to take place, many of them are historic by Ammituqmiut tribes. This area should be protected as archeological site. Governments have taken over our historic sites.
XC23	There are wolves in this area; this is an area where my mother grew up and I still consider that as historical site in many areas. Our areas of important sites now conflict with claims and other areas of explorations because there were no consultations from modern day explorations. This area was a gathering place by all tribes living in this vast area, these tribes (people) includes people from Repulse Bay.

Working Draft Sub-regional map data sources:  
For Land Use Designations and Recommendations sources are draft Nunavut Land Use Plan and background material data source documents.  
Mapscale created by utilizing Swiss method in Hatched toolbars courtesy of ESRI user forums letter bodies created by mapping at 1:250,000 with shapes in Nunavut version 2.0, and replacing all waterbodies over 50 hectares in size. Land outside of Nunavut, courtesy of Geographic Administrative boundaries consist of NPC, and regional boundaries, created to reflect Regional Inuit Association jurisdiction, combined with municipal boundaries, provided by Natural Resources Canada cadastral data. Inuit Owned Lands courtesy of Nunavut Tungavik Incorporated. Territorial parks from the Government of Nunavut. National Parks from Parks Canada.  
Data for areas within municipal boundaries obtained from Natural Resources Canada cadastral data.  
This map is to be used for administrative purposes only by the NPC.  
Any further use of this map or data therein must be authorized by contacting the Nunavut Planning Commission at: (867) 983-4025 or email: [nunavutplanning@nrcan.gc.ca](mailto:nunavutplanning@nrcan.gc.ca)  
Printed: February 25, 2013





Community Land Use Identified from NPC  
Use and Occupancy mapping sessions

- Soapstone
- × Overnight Site
- Subsistence Harvesting
- ▲ Culturally Significant Site



Legend

- Roads
- Inuit Owned Lands (Surface)
- Established Parks (and other land not owned)
- Inuit Owned Lands (Sub-surface)
- Administrative Boundary

Designations	Permitted Uses	Prohibited Uses
BHC-1	Roads, Railways, Utilities and Corridors	
BHC-2	Roads, Railways, Utilities and Corridors	
BHC-3	All uses except those provided	Mining
BHC-4	Public electrical and related infrastructure	
BHC-5	Tourism, Recreation and Research, Municipal Services	
BHC-6	Municipal Services	All Other Uses
BHC-7	Municipal Services	All Other Uses
BHC-8	Remediation and Recreational Activities	All Other Uses
BHC-9	Remediation and Recreational Activities, CND Operations and Activities	All Other Uses
BHC-10	CND Operations and Activities	All Other Uses

Code	Comments
DW17	Very important and very fresh drinking water. Also a good spot for cha.
DW18	Waterfall with very good drinking water.
DW19	Year round water supply.
CS20	Dogs interfering with birds here.

Code	Comments
DW17	Very important and very fresh drinking water. Also a good spot for cha.
DW18	Waterfall with very good drinking water.
DW19	Year round water supply.
CS20	Dogs interfering with birds here.

Signature of Mapper: *[Signature]*

CONFIDENTIAL

Chd b b n 4 b 4 p 4

Nunavut Planning Commission

Coordinate System: EPSG 42304 LCC  
Projection: Lambert Conformal Conic  
Datum: North American 1983  
False Northing: 0.0000  
False Easting: 0.0000  
Central Meridian: -95.0000  
Standard Parallel 1: 49.5000  
Standard Parallel 2: 77.0000  
Latitude Of Origin: 45.0000  
Units: Meter

MAP 3045

For Land Use Designations and Recommendations sources use the Nunavut Land Use Plan and background material data source documents.

Use and Occupancy data from NPC Use and Occupancy mapping sessions, 2004 to 2011.

Hillshade created by using SAGA method in Hillshade toolset courtesy of ESRi user forum water bodies created by merging all 1:50,000 scale maps in Nunavut version 1.0 and selecting all water bodies over 50 hectares in size. Land outside of Nunavut, courtesy of Geomatics, Administrative boundaries consist of NPC 2011 regional boundaries, courtesy of Regional and Association jurisdictions, combined with municipal boundaries, provided by Natural Resources Canada (administrative data, must be owned lands courtesy of Nunavut Territory). Territorial parts from the Government of Nunavut, National Parks from Parks Canada.

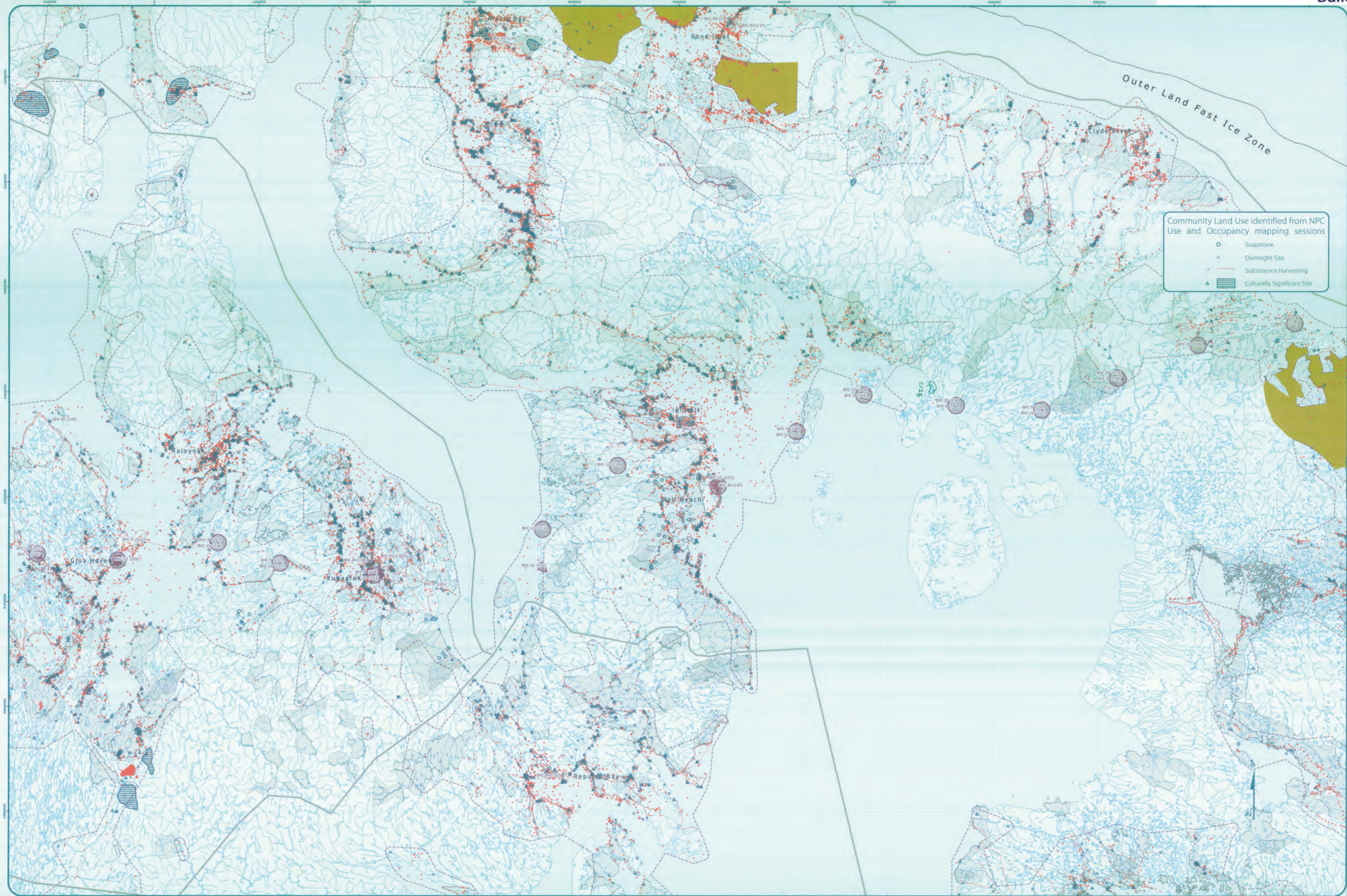
Data for areas within municipal boundaries obtained from Natural Resources Canada (administrative data).

This map is to be used for reference purposes only by the NPC.

Any further use of this map or data must be authorized by contacting the Nunavut Planning Commission at: (867) 963-4625 or email: nplanning@npc.nu.ca

Monday, February 25, 2013





Community Land Use identified from NPC Use and Occupancy mapping sessions

- Soapstone
- × Overnight Site
- Subsistence Harvesting
- ▨ Culturally Significant Site



Legend for map symbols:

- Roads
- Established Parks (Land Use Plan does not apply)
- Inuit Owned Lands (Surface)
- Inuit Owned Lands (Sub-surface)
- Administrative Boundary

Designations	Permitted Uses	Prohibited Uses
BHC-1	Roads, Railways, Utilities and Corridors	
BHC-2	Roads, Railways, Utilities and Corridors	
BHC-3	All uses except those Prohibited	Mining
BHC-4	Hydro electrical and related infrastructure	
BHC-5	Tourism, Recreation and Research, Municipal Services	
BHC-6	Municipal Services	Alcohol Use
BHC-7	Municipal Services	
BHC-8	Remediation and Reclamation Activities	All Other Uses
BHC-9	Remediation and Reclamation Activities, DND Operations and Activities	All Other Uses
BHC-10	DND Operations and Activities	All Other Uses

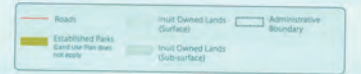
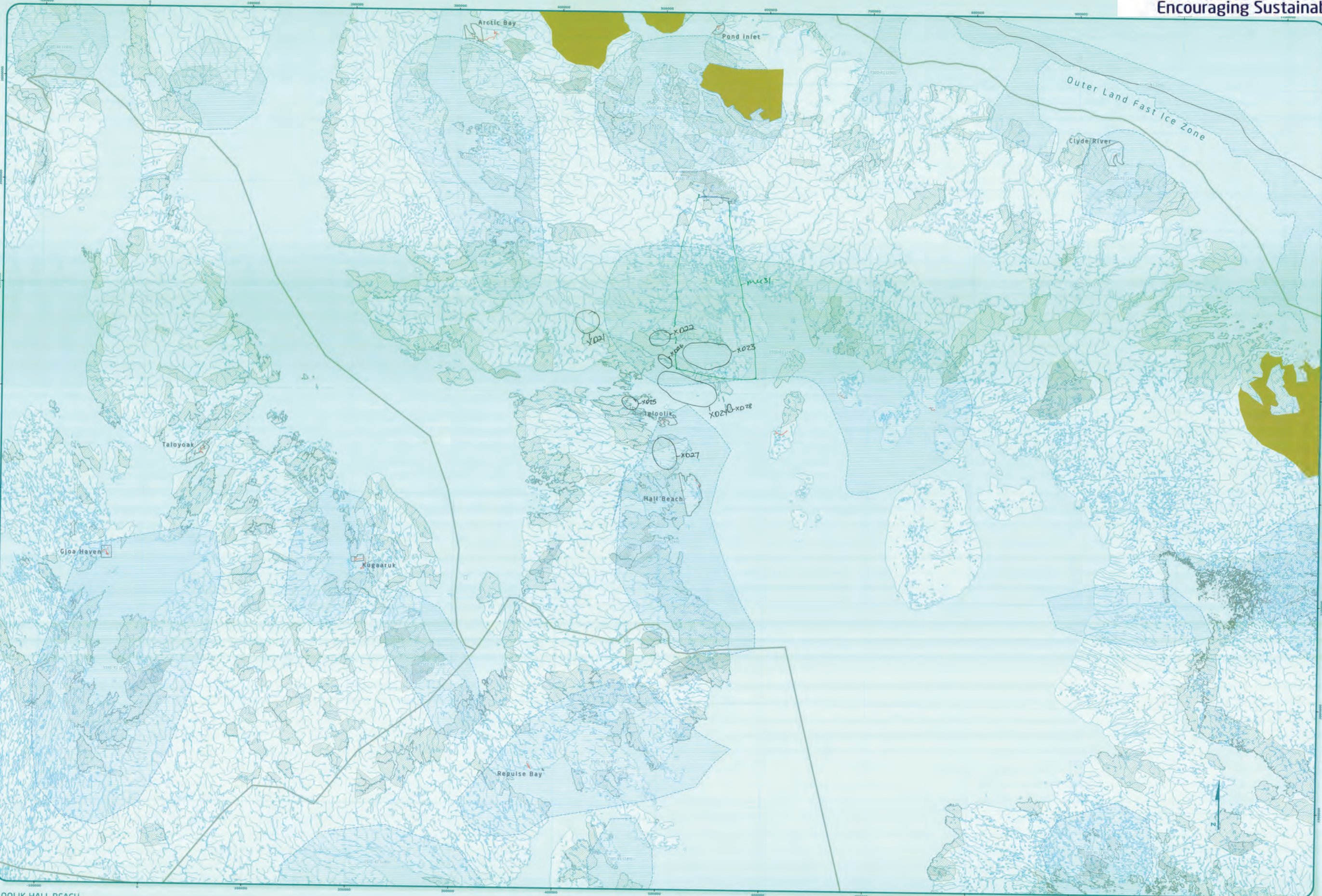
Code	Comments
C125	Large trap 40 feet across. This is a goose fence area.

Signature of Mapper: *[Signature]*

Scale: 1:1,000,000

Coordinate System: EPSG:42304 LCC  
Projection: Lambert Conformal Conic  
Datum: North American 1983  
False Easting: 0.0000  
False Northing: 0.0000  
Central Meridian: -95.0000  
Standard Parallel 1: 49.0000  
Standard Parallel 2: 77.0000  
Latitude Of Origin: 69.0000  
Units: Meter





Designations	Permitted Uses	Prohibited Uses
MU31	Commercial Fishing, Hunting, Gathering, Mining, Pasture, Recreation, Residential, Transportation, Utilities, and other uses.	Commercial Fishing, Hunting, Gathering, Mining, Pasture, Recreation, Residential, Transportation, Utilities, and other uses.
XD21	Commercial Fishing	Commercial Fishing
XD22	Commercial Fishing	Commercial Fishing
XD23	Sealing	Sealing
XD24	Sealing	Sealing
XD25	Soap stone quarry	Soap stone quarry
XD26	Soap stone quarry	Soap stone quarry
XD27	Colourful mud	Colourful mud
XD28	Precious stones	Precious stones
MU31	Concerned about the railway impacts on fish habitat.	Concerned about the railway impacts on fish habitat.

Code	Comments
XD21	Commercial fishing area that isn't identified on the maps?
XD22	Commercial fishing already existing
XD23	Sealing potential in this area.
XD24	Sealing potential in this area.
XD25	Soap stone quarry
XD26	Soap stone quarry
XD27	Colourful mud.
XD28	Precious stones in this areas but would like to see the protected not extracted.
MU31	Concerned about the railway impacts on fish habitat.

Community Planning Commission  
Comments & Approvals from  
Land Use Planning Section

Community: Igloolik  
Location: Igloolik  
Date: March 8, 2013  
Map No: 2045

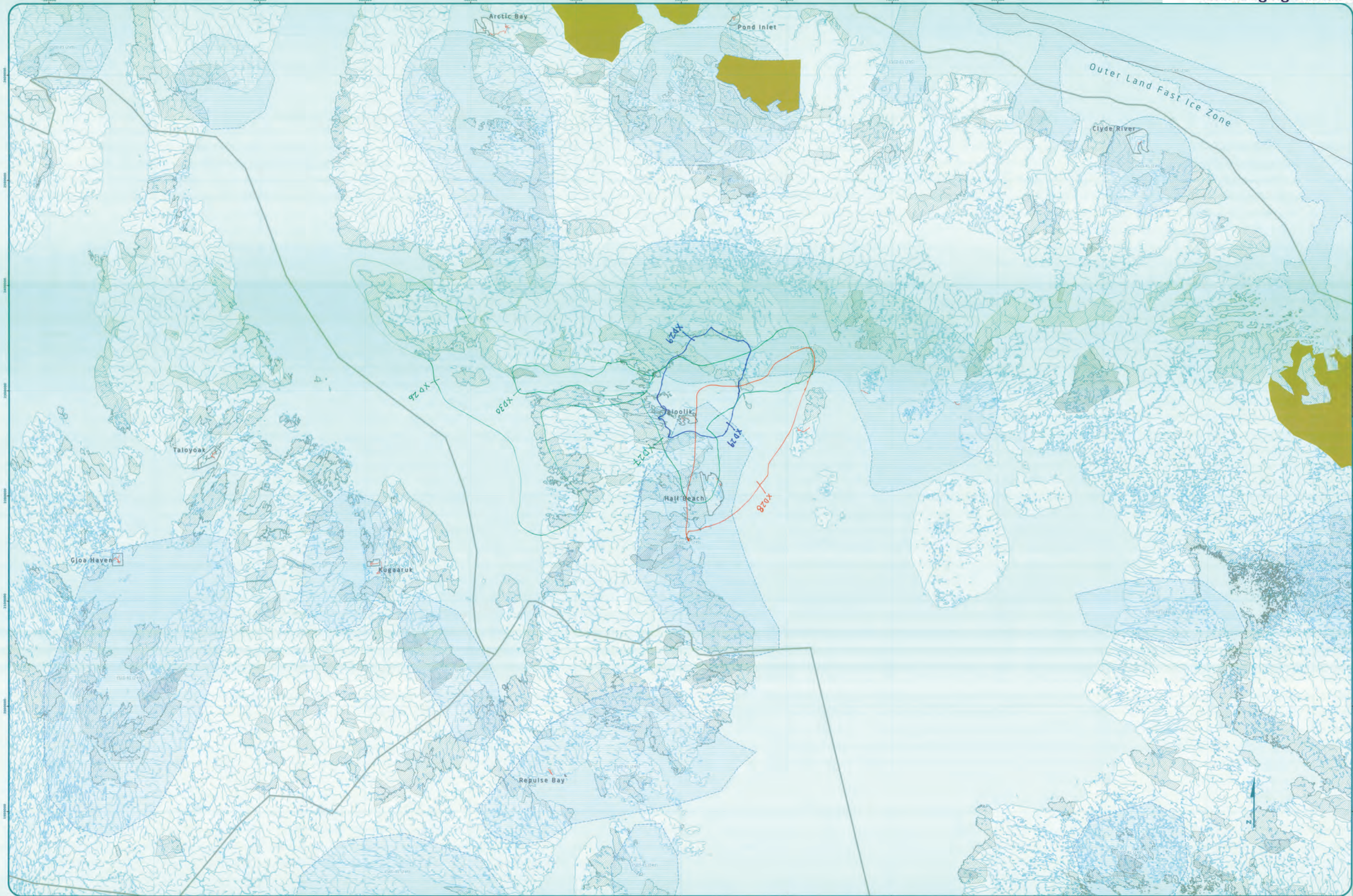
Significance of the Community's input to the process  
None to consider regarding issues in the future.

1. \_\_\_\_\_ 16. \_\_\_\_\_  
2. \_\_\_\_\_ 17. \_\_\_\_\_  
3. \_\_\_\_\_ 18. \_\_\_\_\_  
4. \_\_\_\_\_ 19. \_\_\_\_\_  
5. \_\_\_\_\_ 20. \_\_\_\_\_  
6. \_\_\_\_\_ 21. \_\_\_\_\_  
7. \_\_\_\_\_ 22. \_\_\_\_\_  
8. \_\_\_\_\_ 23. \_\_\_\_\_  
9. \_\_\_\_\_ 24. \_\_\_\_\_  
10. \_\_\_\_\_ 25. \_\_\_\_\_  
11. \_\_\_\_\_ 26. \_\_\_\_\_  
12. \_\_\_\_\_ 27. \_\_\_\_\_  
13. \_\_\_\_\_ 28. \_\_\_\_\_  
14. \_\_\_\_\_ 29. \_\_\_\_\_  
15. \_\_\_\_\_ 30. \_\_\_\_\_

Signature of Mayor: \_\_\_\_\_  
Signature of Commissioner: \_\_\_\_\_

CONFIDENTIAL





Designations	Permitted Uses	Prohibited Uses
Established Parks (Land Use Plan does not apply)	Established Parks (Surface)	Established Parks (Sub-surface)
Inuit Owned Lands (Surface)	Inuit Owned Lands (Sub-surface)	Inuit Owned Lands (Sub-surface)
Administrative Boundary		

Code	Comments
XD26	Polar bear hunting (XC26 and XC27 have different quotas)
XD27	Polar bear hunting (XC26 and XC27 have different quotas)
XD28	Walrus ivory and meat for the people
XD29	Seal skin (Silver Jar Seal) and sea mammals
XD30	Seal Skin and used for food

Community Name: IK  
Date: March 6, 2010  
Map # 415

Signatures of the Community Authority in permission:  
Name of official in mapping section in permission:

1.	16.
2.	17.
3.	18.
4.	19.
5.	20.
6.	21.
7.	22.
8.	23.
9.	24.
10.	25.
11.	26.
12.	27.
13.	28.
14.	29.
15.	30.

Signature of Mapper:

Coordinate System: EPSG:42304 LCC  
Projection: Lambert Conformal Conic  
Datum: North American 1983  
False Easting: 0.0000  
False Northing: 0.0000  
Central Meridian: -95.0000  
Standard Parallel 1: 49.0000  
Standard Parallel 2: 77.0000  
Latitude Of Origin: 49.0000  
Units: Meter

For Land Use Designations and Recommendations sources are:  
Working Draft Sub-regional map data sources  
Draft Nunavut Land Use Plan and background  
information data source documents  
Internal data source documents  
Created by merging all 1:250,000 WTS shapefiles in Nunavut, version 2.0, and selecting all watersheds over  
50 km long or wide. Land outside of Nunavut, including of Nunavut, is shown in grey. Administrative boundaries consist of NPC  
draft regional boundaries created to reflect Regional Inuit Association jurisdictions, combined with municipal  
boundaries, provided by Natural Resources Canada cadastral data. Inuit Owned Lands (IOL) of Nunavut  
Towns incorporated. Territorial parks from the Government of Nunavut, National Parks from Parks Canada.  
Data for areas within municipal boundaries obtained from Natural Resources Canada cadastral data.  
This map is to be used for reference purposes only by the NPC.  
Any further use of this map or data therein must be authorized by contacting the Nunavut Planning  
Commission at (867) 963-4623 or email [npc@npl.ca](mailto:npc@npl.ca)  
Monday, February 25, 2013



Scale 1:1,000,000

1000000 1100000

NPC Regional Map Series



Code	Comments
MU29	Impacts from shipping on walrus not expected in this area and therefore prefers this route.
MU30	Impacts of shipping on walrus in this area could be large.
MU32	Sports hunting for polar bear
MU33	Caribou calving area
MU34	Plateau area, so caribou can calve and detect predators well.

[illegible]

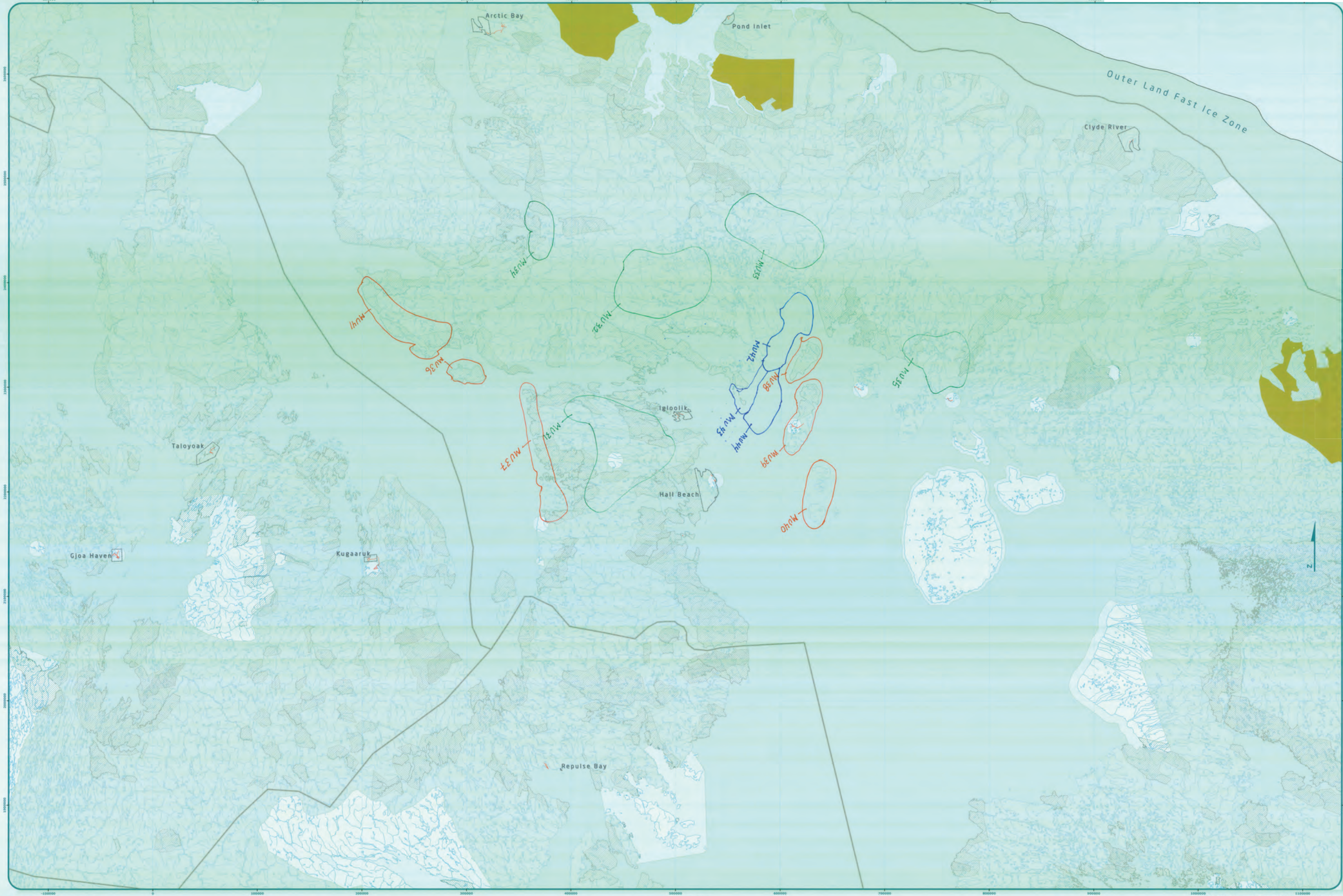
Coordinate System: EPSG 42304 LCC  
Projection: Lambert Conformal Conic  
Datum: North American 1983  
False Easting: 0.0000  
False Northing: 0.0000  
Central Meridian: -95.0000  
Standard Parallel 1: 49.0000  
Standard Parallel 2: 77.0000  
Latitude Of Origin: 49.0000  
Units: Meter

Working Draft Sub-region map data sources:  
 1) Use Designations and Recommendations sources see draft Nunavut Land Use Plan and background information.  
 2) Create map by utilizing Swiss method in Hillshade toolbox courtesy of ESRI user forum. Includes the following:  
 a) Creating all 1:250,000 SWB shapes in a mapset, version 2.0, and selecting all waterbodies over regional boundaries.  
 b) Using Nunavut, Iqaluit, Courtney of Geomatics. Administrative boundaries created as NRC's regional boundaries, created to reflect Regional Self-Association jurisdictions, combined with municipal areas, provided by Natural Resources Canada (cadastre data). Include Owned Lands courtesy of Nunavut Incorporated. Territorial parks from the Government of Nunavut, National Parks from Parks Canada.  
 3) Data for areas within municipal boundaries obtained from Natural Resources Canada (cadastre data).  
 This map is to be used for informational purposes only.  
 Any further use of this map or data therein must be authorized by contacting the Nunavut Planning Commission at: (867)993-4625 or email: [renew@nupc.nu](mailto:renew@nupc.nu)



MIXED USE (MU)

Scale 1:1,000,000

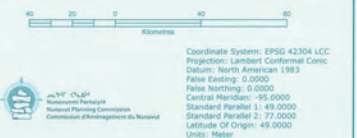


Code	Comments
MU31	Caribou calving grounds for protection.
MU32	Caribou calving grounds for protection.
MU33	Caribou calving grounds for protection.
MU34	Caribou calving grounds for protection.
MU35	Caribou calving grounds for protection.
MU36	Polar bear den area for protection.
MU37	Polar bear den area for protection.
MU38	Polar bear den area for protection.
MU39	Polar bear den area for protection.
MU40	Polar bear den area for protection.
MU41	Polar bear den area for protection.
MU42	Walrus calving and square flipper seal calving.
MU43	Walrus calving for protection.
MU44	Walrus calving for protection.

Community: IK  
Region: Manitoba  
Date: March 8, 2013  
Community RFP: 515  
Map # 10

Signatures of the Community (sign in permission):  
1. PETER AWA  
2. KAGIAT LOKAT  
3. JOHN KADLAK  
4. THE  
5. JOHN KADLAK  
6. JOHN KADLAK  
7. JOHN KADLAK  
8. JOHN KADLAK  
9. JOHN KADLAK  
10. JOHN KADLAK  
11. JOHN KADLAK  
12. JOHN KADLAK  
13. JOHN KADLAK  
14. JOHN KADLAK  
15. JOHN KADLAK

Signature of Mayor: \_\_\_\_\_



Coordinate System: EPSG 42304 LCC  
Projection: Lambert Conformal Conic  
Datum: North American 1983  
False Easting: 0.0000  
False Northing: 0.0000  
Central Meridian: -95.0000  
Standard Parallel 1: 49.0000  
Standard Parallel 2: 77.0000  
Latitude Of Origin: 49.0000  
Units: Meter

For Land Use Designations and Recommendations sources are shown Nunavut Land Use Plan and background information data source documents.  
Habitat created by utilizing Suits method in Heliobate software courtesy of GSI user. Water bodies created by merging all 1:250,000 WTB shapes in Nunavut, version 2.0, and selecting all waterbodies over 50 hectares in size. Land outside of Nunavut, courtesy of Geomatics. Administrative boundaries consist of NPC draft regional boundaries, created to reflect Regional Inuit Association jurisdictions, combined with municipal boundaries, provided by Natural Resources Canada cadastre data. Inuit Owned Lands courtesy of Nunavut Tompkins Incorporated. Territorial parks from the Government of Nunavut, National Parks from Parks Canada. Data for areas within municipal boundaries obtained from Natural Resources Canada cadastre data.  
This map is to be used for reference purposes only by the NPC.  
Any further use of this map or data therein must be authorized by contacting the Nunavut Planning Commission at (867) 983-4625 or email nrc@nunavut.ca  
Monday, February 25, 2013

IGLOOLIK-HALL BEACH

Scale 1:1,000,000

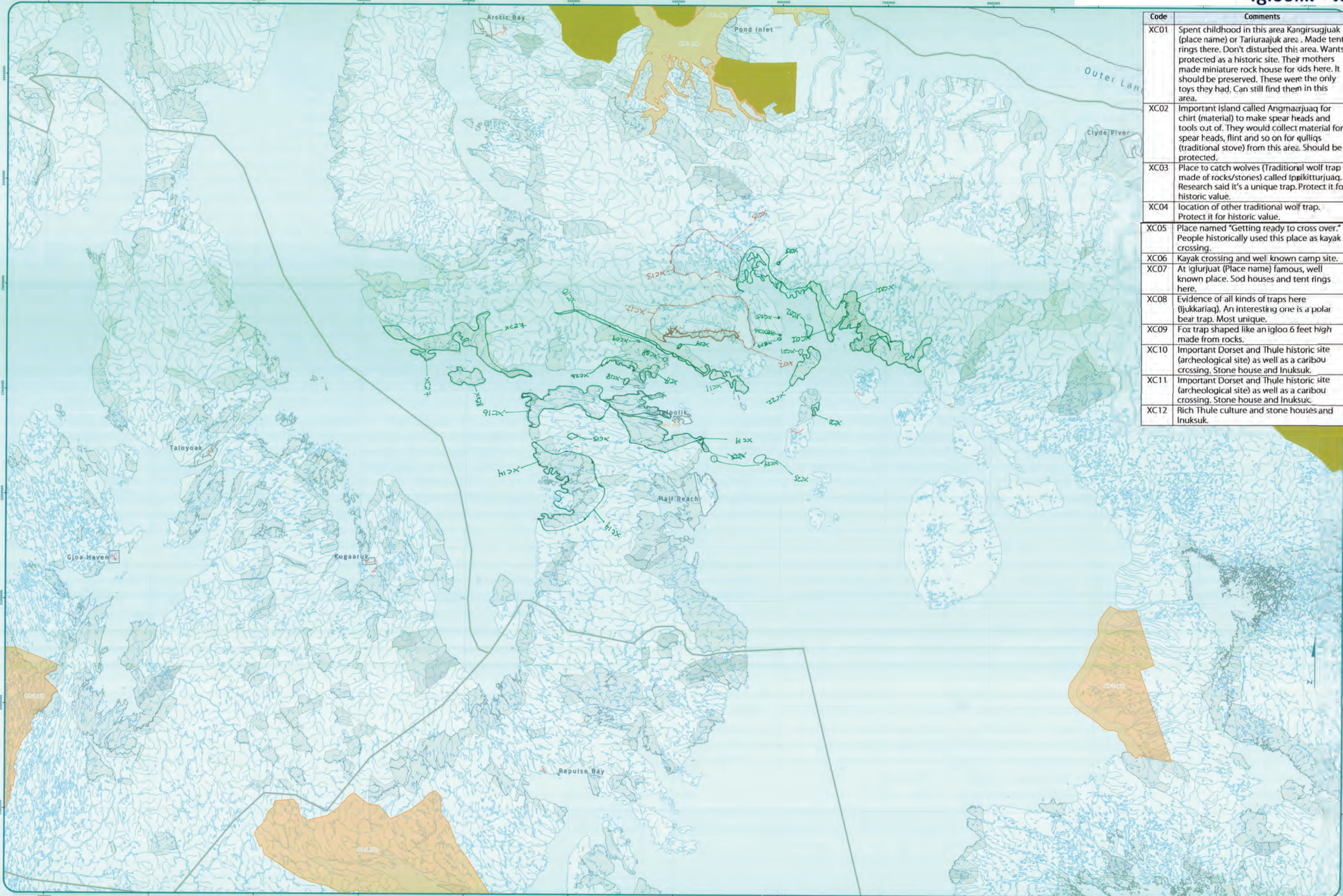
NPC Regional Map Series



## Appendix 5: Wrap Up Session

A small group of participants returned to identify additional important areas during the wrap up session.





Code	Comments
XC01	Spent childhood in this area Kangirsugjuak (place name) or Tariuraajuk area . Made tent rings there. Don't disturbed this area. Wants protected as a historic site. Their mothers made miniature rock house for kids here. It should be preserved. These were the only toys they had. Can still find them in this area.
XC02	Important Island called Angmaerjuaq for chirt (material) to make spear heads and tools out of. They would collect material for spear heads, flint and so on for qulliqs (traditional stove) from this area. Should be protected.
XC03	Place to catch wolves (Traditional wolf trap made of rocks/stones) called Ippikitturjuaq. Research said it's a unique trap. Protect it fo historic value.
XC04	location of other traditional wolf trap. Protect it for historic value.
XC05	Place named "Getting ready to cross over." People historically used this place as kayak crossing.
XC06	Kayak crossing and well known camp site.
XC07	At iglurjuat (Place name) famous, well known place. Sod houses and tent rings here.
XC08	Evidence of all kinds of traps here (Ijukkariaq). An interesting one is a polar bear trap. Most unique.
XC09	Fox trap shaped like an igloo 6 feet high made from rocks.
XC10	Important Dorset and Thule historic site (archeological site) as well as a caribou crossing. Stone house and Inuksuk.
XC11	Important Dorset and Thule historic site (archeological site) as well as a caribou crossing. Stone house and Inuksuk.
XC12	Rich Thule culture and stone houses and Inuksuk.



Designations	Permitted Uses	Prohibited Uses
XC01	Traditional, Subsistence, Cultural	Industrial Use
XC02	Traditional, Subsistence, Cultural	Industrial Use
XC03	Traditional, Subsistence, Cultural	Industrial Use
XC04	Traditional, Subsistence, Cultural	Industrial Use
XC05	Traditional, Subsistence, Cultural	Industrial Use
XC06	Traditional, Subsistence, Cultural	Industrial Use
XC07	Traditional, Subsistence, Cultural	Industrial Use
XC08	Traditional, Subsistence, Cultural	Industrial Use
XC09	Traditional, Subsistence, Cultural	Industrial Use
XC10	Traditional, Subsistence, Cultural	Industrial Use
XC11	Traditional, Subsistence, Cultural	Industrial Use
XC12	Traditional, Subsistence, Cultural	Industrial Use
XC13	Traditional, Subsistence, Cultural	Industrial Use
XC14	Traditional, Subsistence, Cultural	Industrial Use
XC15	Traditional, Subsistence, Cultural	Industrial Use
XC16	Traditional, Subsistence, Cultural	Industrial Use
XC17	Traditional, Subsistence, Cultural	Industrial Use
XC18	Traditional, Subsistence, Cultural	Industrial Use
XC19	Traditional, Subsistence, Cultural	Industrial Use
XC20	Traditional, Subsistence, Cultural	Industrial Use
XC21	Traditional, Subsistence, Cultural	Industrial Use
XC22	Traditional, Subsistence, Cultural	Industrial Use
XC23	Traditional, Subsistence, Cultural	Industrial Use
XC24	Traditional, Subsistence, Cultural	Industrial Use
XC25	Traditional, Subsistence, Cultural	Industrial Use
XC26	Traditional, Subsistence, Cultural	Industrial Use
XC27	Traditional, Subsistence, Cultural	Industrial Use
XC28	Traditional, Subsistence, Cultural	Industrial Use

XC13	Very important area for caribou hunting and the legend of the woman who became Queen of Igloolik (Her name was Atagutaaaluk). Both the High School and Elementary School named after her. The legend is a very famous and well documented story of a family who were starving and ate the dogs and their children Place is known as "Inukturvik" (place to eat people).
XC14	Extremely rich in archeological sites for Dorset and Thule culture (caribou, seal, and Polar bear).
XC15	Highest mountain on Peninsula and is home of the Spirits.
XC16	Traditional homes, traditional/historical artifacts and heavily used for hunting year round. Caribou and Polar bear.
XC17	Historically significant as well for Cultural value for Thule and Dorset Inuit. Sensitive area.
XC18	Is a feeding ground for Nor Wal and Beluga Whale, this area here, this inlet used to be a waiting place for whalers as it is a feeding grounds for them.
XC19	Culturally sensitive hunting area for present day and used historically by Dorset culture. Archeological Site. Layers of sod houses and lots of bones. There are a lot of burial sites researched by historians in the area in this area.
XC20	Archeological site
XC21	Archeological Site. Just the Island inside XC21. Also sometimes gets caribou.
XC22	Archeological Site. Coke Island. Caribou here.
XC23	XC23 was added to XC19. XC23 deleted
XC24	Dorset and Thule met here and fought. Very important culturally to both Dorset and Thule. There are also walrus here (2 Islands inside XC24). Also, rich in Ptarmigan birds and eider ducks, terns, and sea fowl and migratoy birds.
XC25	Manning Islands (small, can't see it on the map, used approximate location) has legend connected to it and its home for polar bears, walrus, and is very rich nesting place for sea fowl.
XC26	Rich archeological site (artifacts). Stone houses built in the early 1900's.
XC27	Sensitive area for marine life, caribou, polar bear, beluga and narwhale. Inhabited by Dorset and Thule people for centuries.
XC28	Island heavily used by Inuit. Mainly marine life (Square flipper seal, narwhale, walrus, rich in ring seal, polar bear, and some caribou). Many stories about the area.



## Appendix 6: Follow-up Meeting

The NPC returned to the community to review a draft version of this report with the Hamlet Council, Hunters and Trappers Organization, and Community Lands and Resource Committee. The meeting included:

- A presentation of a draft version of this report
- An overview of the mapped information that was recorded for each topic:
  - Protecting and Sustaining the Environment
  - Encouraging Conservation Planning
  - Building Healthier Communities
  - Encouraging Sustainable Economic Development
  - Mixed Use
- Potential changes to the classification of a few mapped areas were discussed and agreed to.
- General discussion and comments including:
  - Opportunities to provide additional comments
  - Timelines for completion
  - Recorded areas XP01 in Group 1: concerned that the identified shipping route goes through an area that is important to bird nesting
  - Concerned with oil spills
  - Interested in a soapstone quarry found between Igloodik and Hall Beach
  - Concerned with researchers tagging animals
  - Concerned with smoke and pollution from dumps